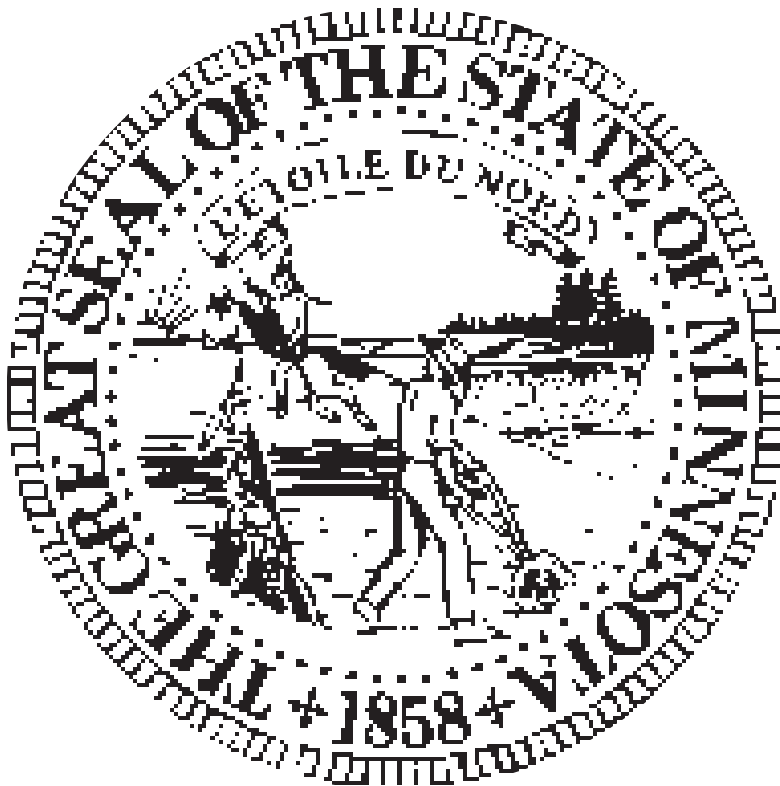


State of Minnesota

State Register

Rules and Official Notices Edition



Published every Monday (Tuesday when Monday is a holiday) by the
Department of Administration – Communications Media Division

Tuesday 7 September 1999
Volume 24, Number 10
Pages 295-340

State Register

Judicial Notice Shall Be Taken of Material Published in the *State Register*

The *State Register* is the official publication of the State of Minnesota, published weekly to fulfill the legislative mandate set forth in *Minnesota Statutes* § 14.46. The *State Register* contains:

- proposed, adopted, exempt, expedited emergency and withdrawn rules
- executive orders of the governor
- appointments
- proclamations and commendations
- commissioners' orders
- revenue notices
- official notices
- state grants and loans
- contracts for professional, technical and consulting services
- non-state public bids, contracts and grants
- certificates of assumed name, registration of insignia and marks

Jesse Ventura, Governor 651/296-3391	Mike Hatch, Attorney General 651/297-4272	Mary Kiffmeyer, Secretary of State 651/296-2079
Mae Schunk, Lt. Governor 651/296-3391	Judi Dutcher, State Auditor 651/297-3670	Carol Johnson, State Treasurer 651/296-7091
Department of Administration: David F. Fisher, Commissioner 651/296-1424 Kent Allin, Asst. Commissioner 651/297-4261	Communications.Media Division: Mary Mikes, Director 651/297-3979 Susan Baustian-Culligan, Manager 651/282-2974	Robin PanLener, Editor 651/297-7963 Jane E. Schmidley, Assistant Editor 651/296-4273 Jessie Rahmeyer, Subscriptions 651/297-8774

Printing Schedule and Submission Deadlines

Vol. 24 Issue Number	PUBLISH DATE	Deadline for both Adopted and Proposed RULES	Deadline for: Emergency Rules, Executive and Commissioner's Orders, Revenue and Official Notices, State Grants, Professional-Technical-Consulting Contracts, Non-State Bids and Public Contracts
#10	Tuesday 7 September	Noon Wednesday 25 August	Noon Tuesday 31 August
#11	Monday 13 September	Noon Wednesday 1 September	Noon Tuesday 7 September
#12	Monday 20 September	Noon Wednesday 8 September	Noon Tuesday 14 September
#13	Monday 27 September	Noon Wednesday 15 September	Noon Tuesday 21 September

Copyright © 1999 Communications.Media Division, Department of Administration, State of Minnesota.
Publication Number: 326630. (ISSN 0146-7751)

SUBSCRIPTION SERVICES: Copies are available at Minnesota's Bookstore, 117 University Avenue, St. Paul, MN 55155. Order by phone: Metro area: (651) 297-3000 Toll free 800-657-3757. TTY relay service phone number: 1-800-627-3529. **NO REFUNDS.** Subscribers who do not receive a copy of an issue should notify the *State Register* Subscription Office immediately at (651) 297-8774. Copies of back issues may not be available more than two weeks after publication. Both editions are delivered postpaid to points in the United States, Periodicals Postage Paid for the *State Register* at St. Paul, MN, first class for the *Contracts Supplement*. See the *State Register* and the *Contracts Supplement* on our website: <http://www.comm.media.state.mn.us> Click on "Minnesota's Bookstore."

- *State Register* (published every Monday, or Tuesday if Monday is a holiday) One year, hard copy, paper subscription: \$160.00.
- *Contracts Supplement* (published every Tuesday, Wednesday, Friday) One year subscription: \$135.00 via first class mail, \$150.00 via fax or through our website. Users agree not to redistribute without authorization.
- **13-week trial subscription** which includes both the *State Register* and *Contracts Supplement*. \$65.00
- **Single issues** are available for a limited time: *State Register* \$5.00, *Contracts Supplement* \$1.00. Shipping is \$3.00 per order.

PUBLISHING NOTICES IN THE *State Register*: Submit TWO COPIES of your notice, typed double-spaced. State agency submissions must include a "State Register Printing Order" form, and a "Certification/Internal Contract Negotiation" form with contracts for professional, technical and consulting services. Non-State Agencies should submit TWO COPIES, with a letter on your letterhead stationery requesting publication and date to be published. FAXED submissions to 651-297-8260 are received to meet deadline requirements, but must be followed by originals and applicable forms or letters to be accepted. The charge is \$115.00 per page, billed in tenths of a page (columns are seven inches wide). About 2-1/2 pages typed double-spaced on 8-1/2"x11" paper equal one typeset page in the *State Register*. Contact the editor if you have questions.

An "Affidavit of Publication" can be obtained at a cost of \$10.00 for notices published in the *State Register*. This service includes a notarized "Affidavit of Publication" and a copy of the issue of the *State Register* in which the notice appeared.

The *State Register* is published by Communications.Media Division, Department of Administration, State of Minnesota, pursuant to *Minnesota Statutes* § 14.46 and is available at the main branch of county libraries in Minnesota and all "State Depository Libraries": State University and Community College libraries; the University of Minnesota libraries; St. Paul, Minneapolis and Duluth Public Libraries; the Legislative Reference Library; State Law Library; Minnesota Historical Society Library; and the Library Development Service at the State Department of Children, Families and Learning.

FOR LEGISLATIVE NEWS

Publications containing news and information from the Minnesota Senate and House of Representatives are available free to concerned citizens and the news media. To be placed on the mailing list, write or call the offices listed below:

Contact: Senate Public Information Office (651) 296-0504 Room 231 State Capitol, St. Paul, MN 55155	Contact: House Information Office (651) 296-2146 Room 175 State Office Building, St. Paul, MN 55155
--	--

Minnesota Rules: Amendments & Additions Volume 24, Issues #1-10.....	298	Professional, Technical & Consulting Contracts	
Adopted Rules		Arts Education, Perpich Center for	
Agriculture Department		Proposals sought to research, develop and facilitate implementation of best practices in arts education.....	330
Noxious weeds.....	299	Colleges and Universities, Minnesota State (MnSCU)	
Health Department		Rainy River Community College seeks proposals for window renovation project.....	330
Public drinking water system.....	301	St. Cloud State University seeks proposals for ice resurfacer machine.....	331
Exempt Rules		Employee Relations Department	
Labor and Industry Department		Proposals sought for long-term care insurance vendors.....	331
Adopted exempt permanent rules relating to workers' compensation; independent medical examination fees; conversion factor.....	302	Natural Resources Department	
Natural Resources Department		Proposals sought for design, fabrication, and installation of interpretive children's exhibits for the International Wolf Center's educational facility in Ely, Minnesota.....	332
Adopted exempt permanent rules relating to restrictions on designated trout streams and lakes.....	303	Proposals sought for a study to evaluate the effects of replacing the state's payment in lieu of taxes program with ad valorem payments.....	334
Official Notices		Public Employees Retirement Association (PERA)	
Agriculture Department		Proposals sought for professional and technical services to facilitate an implementation of a benefit payment and DCP investment system.....	334
Addendum to public hearing notice on future ACRRRA surcharges.....	317	Public Safety Department	
Special local need registration for Super Tin 80 WP fungicide.....	317	Proposals sought for creative professional services for 2000 motorcycle safety public information and education campaign.....	335
Attorney General's Office		Non-State Public Bids, Contracts & Grants	
Public meeting Tuesday 14 September 1999 on proposed revisions to the brochure "Landlords and Tenants: Rights and Responsibilities".....	318	Metropolitan Airports Commission	
Human Services Department		Bids sought for lease and rental of snow removal equipment with operators at Minneapolis-St. Paul International Airport.....	336
Correction to notice regarding payment rates for the state regional treatment centers.....	318	Proposals sought for snow/ice removal from canopies and other roof tops at Minneapolis-St. Paul International Airport.....	336
Comments sought on state plan for temporary assistance for needy families.....	319	Metropolitan Council	
Metropolitan Council		Proposals sought for construction testing services.....	337
Adoption of the 2000-2002 transportation improvement program for the Twin Cities metropolitan area.....	326	PrimeWest Health System	
Public hearing on amending the aviation policy plan - land use compatibility guidelines for aircraft noise.....	326	Professional services sought for vendor to provide pharmacy benefit management services to 10-county joint powers entity.....	337
Public Employees Retirement Association (PERA)		University of Minnesota	
Meeting of the Board of Trustees Thursday 9 September 1999.....	327	Bid Information Service (BIS) available for all potential vendors.....	338
Trade and Economic Development Department		Bids sought for construction of new indoor ice hockey arena and tennis center at the University of Minnesota-Twin Cities campus.....	338
Comments sought on state business regulations.....	327	Commodity, Service, and Construction contracts are published in a bulletin, the <i>State Register Contracts Supplement</i> , published Tuesday, Wednesday and Friday. Award results are available from the Materials Management Helpline (651) 296-2600. Individual copies and subscriptions are available through Minnesota's Bookstore, (651) 297-3000, or 1-800-657-3757.	
State Grants & Loans			
Human Services Department			
Proposals sought to develop a family group decision making process.....	329		
Public Safety Department			
Funds available for criminal gang strike force officer replacement.....	329		
Funds available for expanding local capacity to combat gangs.....	329		

Minnesota Rules: Amendments and Additions

NOTICE: How to Follow State Agency Rulemaking in the State Register

The *State Register* is the official source, and only complete listing, for all state agency rulemaking in its various stages. State agencies are required to publish notice of their rulemaking action in the *State Register*. Published every Monday, the *State Register* makes it easy to follow and participate in the important rulemaking process. Approximately 80 state agencies have the authority to issue rules. Each agency is assigned specific **Minnesota Rule** chapter numbers. Every odd-numbered year the **Minnesota Rules** are published. The current 1997 set is a 13-volume bound collection of all adopted rules in effect at the time. Supplements are published to update this set of rules. Generally speaking, proposed and adopted exempt rules do not appear in this set because of their short-term nature, but are published in the *State Register*.

An agency must first solicit **Comments on Planned Rules** or **Comments on Planned Rule Amendments** from the public on the subject matter of a possible rulemaking proposal under active consideration within the agency (*Minnesota Statutes* §§ 14.101). It does this by publishing a notice in the *State Register* at least 60 days before publication of a notice to adopt or a notice of hearing, or within 60 days of the effective date of any new statutory grant of required rulemaking.

When rules are first drafted, state agencies publish them as **Proposed Rules**, along with a notice of hearing, or a notice of intent to adopt rules without a hearing in the case of noncontroversial rules. This notice asks for comment on the rules as proposed. Proposed emergency rules and withdrawn proposed rules are also published in the *State Register*. After proposed rules have gone through the comment period, and have been rewritten into their final form, they again appear in the *State Register* as **Adopted Rules**. These final adopted rules are not printed in their entirety in the *State Register*, only the changes made since their publication as Proposed Rules. To see the full rule, as adopted and in effect, a person simply needs two issues of the *State Register*, the issue the rule appeared in as proposed, and later as adopted. For a more detailed description of the rulemaking process, see the most current edition of the *Minnesota Guidebook to State Agency Services*.

The *State Register* features partial and cumulative listings of rules in this section on the following schedule: issues #1-13 inclusive; issues #14-25 inclusive; issue #26 cumulative for issues #1-26; issues #27-38 inclusive; issue #39, cumulative for issues #1-39; issues #40-51 inclusive; and issues #1-52 (or 53 in some years), cumulative for issues #1-52 (or 53). An annual subject matter index for rules was separately printed usually in August, but starting with Volume 19 now appears in the final issue of each volume. For copies or subscriptions to the *State Register*, contact Minnesota's Bookstore, 117 University Avenue, St. Paul, MN 55155 (651) 297-3000, or toll-free 1-800-657-3757.

Volume 24, Issues # 1-10

Accountancy Board

1100.0100; .0200; .0500; .0600; .0700; .0800; .1000; .1100; .1300; .1400; .1700; .1750; .1900; .2110; .2115; .2150; .2200 .3250; .3400; .3550; .3600; .4000; .4200; .4300; .4650; .4900; .6500; .6700; .7200; .9150; .9300; .9800 (adopted).....	237
1100.1900 s. 1 (repealed).....	237

Agriculture Department

1505.0730; .0732; .0740 (adopted).....	299
--	-----

Arts Board

1900.0310; .0410; .1010; .1620; .1710; .1810; .1910; .2010; .2110; .4010 (proposed).....	167
--	-----

Barber Examiners Board

2100.9300 (proposed).....	203
---------------------------	-----

Chiropractic Examiners Board

2500.3000 (proposed).....	205
2500.5050 (proposed).....	206

Children, Families and Learning Department

3535.0100; .0110; .0120; .0130; .0140; .0150; .0160; .0170; .0180 (adopted).....	77
3535.0200; .0300; .0400; .0500; .0600; .0700; .0900; .1100; .1200; .1300; .1500; .1700; .2000 (repealed).....	77

Health Department

4668.0003; .0012; .0050; .0805; .0810; .0815; .0825; .0835; .0840; .0855; .0860; .0865 (adopted).....	141
4720.0012; .0350; .0450; .2300; .3920; .3950 (adopted).....	301

Higher Education Services Office

4830.0300 (proposed).....	105
---------------------------	-----

Human Rights Department

5000.3200; .3300; .3400; .3410; .3415; .3420; .3450; .3460; .3480; .3500; .3520; .3530; .3535; .3540; .3550; .3552; .3555; .3557; .3560; .3570; .3580; .3600 (adopted).....	273
5000.3400 s.23 (repealed).....	273

Labor and Industry Department

5205.0010 (adopted exempt).....	274
5219.0500; 5221.4020 (adopted exempt).....	302

Natural Resources Department

6100.0100; .0200; .0300; .0500; .0525; .0550; .0600; .0650; .0700; .0800; .0900; .1000; .1100; .1200; .1250; .1350; .1355; .1400; .1500; .1600; .1650; .1700; .1710; .1900; .1950; .2350; .2400 (adopted)...	208
6100.0400; .0500 s. 3a, 5c, 5d, 7c; .0800 s. 3, 4; .1300; .1610; .1800; .1905; .1910; .1920; .1930; .2000; .2100; .2300 (repealed).....	208
6213.0100; .0200; .0300; .0310; .0320; .0400; .0410; .0420; .0500; .0510; .0600; .0700; .0800 (adopted).....	238
6216.0350 (adopted expedited emergency).....	240
6230.0200; .0400; .0600; 6232.0900; 6234.0800; 6236.0900; 6240.0300; .0700; .1200; .1500; .1600; .1700; .1750; .1850 (adopted expedited emergency).....	275
6236.0700 (adopted expedited emergency).....	181
6264.0050 (adopted exempt).....	303

Pollution Control Agency

7039.0010 .0050; .0070; .0080; .0090; .0110 (adopted).....	179
7050.0185; 0200; .0210; .0211; .0213; .0214; .0218; .0220; .0221; .0222; .0224; .0227; .0420; .0470 (proposed).....	5
7050.0020 s. 3, 4, 5, 6 (proposed repealer).....	5

Public Safety Department

7403.1300 (adopted).....	144
--------------------------	-----

Public Utilities Commission

7825.2100 (proposed repealer).....	177
------------------------------------	-----

State Lottery

7857.4010 (adopted).....	180
--------------------------	-----

Minnesota State Retirement System

7905.0100; .0200; .0800; .0900; .1100; .1700; .1900; .2100; .2200; .2300; .2400 (adopted exempt).....	79
7905.0100 s. 11, 18; .3000 (repealed exempt).....	79

Revenue Department

8122.0510; .0550; .0600 (proposed).....	123
---	-----

Adopted Rules

A rule becomes effective after the requirements of *Minnesota Statutes* §§ 14.05-14.28 have been met and five working days after the rule is published in the *State Register*, unless a later date is required by statutes or specified in the rule.

If an adopted rule is identical to its proposed form as previously published, a notice of adoption and a citation to its previous *State Register* publication will be printed.

If an adopted rule differs from its proposed form, language which has been deleted will be printed with strikeouts and new language will be underlined. The rule's previous *State Register* publication will be cited.

Exempt Rules

An exempt rule adopted under *Minnesota Statutes* §§ 14.386 or 14.388 is effective upon its publication in the *State Register*.

Emergency Expedited Rules

Provisions for the Commissioner of Natural Resources to adopt emergency expedited Game and Fish Rules are specified in *Minnesota Statutes* §§ 84.027. The commissioner may adopt emergency expedited rules when conditions exist that do not allow the Commissioner to comply with the requirements for emergency rules. The Commissioner must submit the rule to the attorney general for review and must publish a notice of adoption that includes a copy of the rule and the emergency conditions. Emergency expedited rules are effective upon publication in the *State Register*, and may be effective up to seven days before publication under certain emergency conditions. Emergency expedited rules are effective for the period stated or up to 18 months.

Department of Agriculture

Adopted Permanent Rules Relating to Noxious Weeds

The rules proposed and published at *State Register*, Volume 23, Number 43, pages 2037-2040, April 26, 1999 (23 SR 2037), and Volume 23, Number 49, page 2254, June 7, 1999 (23 SR 2254), are adopted with the following modifications:

1505.0730 PROHIBITED NOXIOUS WEEDS.

Subpart 1. **State prohibited noxious weed list.** The plants listed in this part are prohibited noxious weeds because they are injurious to public health, the environment, public roads, crops, livestock, and other property. Prohibited noxious weeds must be controlled or eradicated as required in *Minnesota Statutes*, section 18.78.

Common Name	Botanical Name
Field Bindweed	Convolvulus arvensis (<u>L.</u>)
Hemp	Cannabis sativa (<u>L.</u>)
Loosestrife, purple	Lythrum salicaria, virgatum, (<u>L.</u>) or any combination
Mustard, garlic	Alliaria petiolata (<u>Bieb.</u>) (formerly alliaria officinalis)
*Poison Ivy	Toxicodendron radicans (<u>Ktze.</u>) (formerly rhus radicans)
Spurge, leafy	Euphorbia esula (<u>L.</u>)
Sow thistle, perennial	Sonchus arvensis (<u>L.</u>)
Thistle, bull	Cirsium vulgare (<u>Savi</u>) <u>Tenore</u>
Thistle, Canada	Cirsium arvense (<u>L.</u>) <u>Scop.</u>
Thistle, musk	Carduus nutans (<u>L.</u>)
Thistle, plumeless	Carduus acanthoides (<u>L.</u>)

*Native species to Minnesota

Subp. 2. **Federal noxious weed list.** For the purpose of this part, the parasitic and the terrestrial plants listed in the *Code of Federal Regulations*, title 7, section 360.200, are also prohibited noxious weeds.

KEY: PROPOSED RULES SECTION — Underlining indicates additions to existing rule language. ~~Strike outs~~ indicate deletions from existing rule language. If a proposed rule is totally new, it is designated "all new material." **ADOPTED RULES SECTION** — Underlining indicates additions to proposed rule language. ~~Strike outs~~ indicate deletions from proposed rule language.

Adopted Rules

1505.0732 RESTRICTED NOXIOUS WEEDS.

The plants listed in this part are restricted noxious weeds whose only feasible means of control is to prohibit the importation, sale, and transportation of them or their propagating parts in the state except as provided by *Minnesota Statutes*, section 18.82.

Common Name	Botanical Name
Buckthorn, common or European	Rhamnus cathartica (<u>L.</u>)
Buckthorn, glossy, including all cultivars	*Rhamnus frangula, (<u>L.</u>) (columnaris, tallcole, asplenifolia, and and all other cultivars

*Rhamnus frangula is a restricted noxious weed effective December 31, 2000.

1505.0740 SECONDARY NOXIOUS WEEDS.

The weeds on this list may be added to a county prohibited or restricted list by following the process in part 1505.0750. The common and botanical names for secondary noxious weeds are those listed in the following table.

Common Name	Botanical Name
Alyssum, hoary	Berteroa incana (<u>L.</u>) <u>DC.</u>
*Artichoke, Jerusalem	Helianthus tuberosus (<u>L.</u>)
Buckwheat, wild	Polygonum convolvulus (<u>L.</u>)
*Buffalobur	Solanum rostratum (<u>Dunal</u>)
Burdock	Arctium minus (<u>Hill</u>) <u>Bernh.</u>
Buttercup, tall	Ranunculus acris (<u>L.</u>)
*Bracken	Pteridium aquilinum (<u>L.</u>) <u>Kuhn</u>
Carrot, wild	Daucus carota (<u>L.</u>)
Catchfly, nightflowering	Silene noctiflora (<u>L.</u>)
Cockle, white	Lychnis alba (<u>Mill.</u>)
*Cocklebur, common	Xanthium pennsylvanicum (<u>Wallr.</u>)
Daisy, oxeye	Chrysanthemum leucanthemum (<u>L.</u>)
Dock, curly	Rumex crispus (<u>L.</u>)
Flixweed	Descurainia sophia (<u>L.</u>) <u>Webb</u>
Foxtail, giant	Setaria faberii (<u>Herrm.</u>)
*Gumweed, curlycup	Grindelia squarrosa (<u>Pursh</u>) <u>Dunal</u>
Hawksbeard, narrowleaf	Crepis tectorum (<u>L.</u>)
Hawksbeard, smooth	Crepis capillaris (<u>L.</u>) <u>Wallr.</u>
Hawkweed, orange	Hieracium aurantiacum (<u>L.</u>)
Jimsonweed	Datura Stramonium (<u>L.</u>)
Knapweed, Russian	Centaurea repens (<u>L.</u>)
Knapweed, spotted	Centaurea maculosa (<u>Lam.</u>)
Kochia	Kochia scoparia (<u>L.</u>) <u>Roth</u>
Lamb's-quarters, common	Chenopodium album (<u>L.</u>)
Mallow, Venice	Hibiscus trionum (<u>L.</u>)
*Marsh elder	Iva xanthifolia (<u>Nutt.</u>)
*Milkweed, common	Asclepias syriaca (<u>L.</u>)
*Muhly, wire stem	Muhlenbergia frondosa (<u>Poir.</u>) <u>Fern.</u>
Mustard, wild	Brassica kaber (<u>DC.</u>) <u>L. C.</u> <u>Wheeler</u>
Nightshade, black	Solanum nigrum (<u>L.</u>)
Nutsedge, yellow (nutgrass)	Cyperus esculentus (<u>L.</u>)
Oat, wild	Avena fatua (<u>L.</u>)
Panicum, fall	Panicum dichotomiflorum (<u>Michx.</u>)
Panicum, wild proso millet	Panicum miliaceum (<u>L.</u>)

Pigweed, redroot
Pigweed, prostrate
Quackgrass
Radish, wild
*Ragweed, common
*Ragweed, giant
*Sanbur, long spined

*Smartweed, Pennsylvania
Smartweed (lady's thumb)
Sorghum-almum
*Sunflower, common (except cultivars)
Tansy
Thistle, Russian
Velvetleaf
Yellow rocket
Wooly cupgrass
*Wormwood, absinth

Amaranthus retroflexus (L.)
Amaranthus blitoides (S. Wats.)
Agropyron repens (L.) Beauv.
Raphanus raphanistrum (L.)
Ambrosia artemisiifolia (L.)
Ambrosia trifida (L.)
Cenchrus ~~incertus~~ longispinus (Heck.) Fern.
Polygonum pennsylvanicum (L.)
Polygonum persicaria (L.)
Sorghum alnum (Parodi)
Helianthus annuus (L.)

Tanacetum vulgare (L.)
Salsola kali (L.)
Abutilon theophrasti (Medic.)
Barbarea vulgaris R. Br.
Eriochloa villosa (Thunb.) Kunth
Artemisia absinthium (L.)

*Native species to Minnesota

Department of Health

Adopted Permanent Rules Relating to Public Drinking Water System

The rules proposed and published at *State Register*, Volume 23, Number 50, pages 2274-2277, June 14, 1999 (23 SR 2274), are adopted as proposed.

KEY: PROPOSED RULES SECTION — Underlining indicates additions to existing rule language. ~~Strike outs~~ indicate deletions from existing rule language. If a proposed rule is totally new, it is designated "all new material." **ADOPTED RULES SECTION** — Underlining indicates additions to proposed rule language. ~~Strike outs~~ indicate deletions from proposed rule language.

Exempt Rules

Exempt rules are excluded from the normal rulemaking procedures (*Minnesota Statutes* §§ 14.386 and 14.388). They are most often of two kinds. One kind is specifically exempted by the Legislature from rulemaking procedures, but approved for form by the Revisor of Statutes, reviewed for legality by the Office of Administrative Hearings, and then published in the *State Register*. These exempt rules are effective for two years only.

The second kind of exempt rule is one adopted where an agency for good cause finds that the rulemaking provisions of *Minnesota Statutes*, Chapter 14 are unnecessary, impracticable, or contrary to the public interest. This exemption can be used only where the rules:

- (1) address a serious and immediate threat to the public health, safety, or welfare, or
- (2) comply with a court order or a requirement in federal law in a manner that does not allow for compliance with *Minnesota Statutes* §§ 14.14-14.28, or
- (3) incorporate specific changes set forth in applicable statutes when no interpretation of law is required, or
- (4) make changes that do not alter the sense, meaning, or effect of the rules.

These exempt rules are also reviewed for form by the Revisor of Statutes, for legality by the Office of Administrative Hearings and then published in the *State Register*. In addition, the Office of Administrative Hearings must determine whether the agency has provided adequate justification for the use of this exemption. Rules adopted under clauses (1) or (2) above are effective for two years only.

The Legislature may also exempt an agency from the normal rulemaking procedures and establish other procedural and substantive requirements unique to that exemption.

Department of Labor and Industry

Adopted Exempt Permanent Rules Relating to Workers' Compensation; Independent Medical Examination Fees; Conversion Factor

5219.0500 INDEPENDENT MEDICAL EXAMINATION FEES.

[For text of subs 1 to 3, see M.R.]

Subp. 4. **Adjustments.** On October 1, 1994, and on October 1 of each succeeding year, the fees in this part must be adjusted by the percentage determined under *Minnesota Statutes*, section 176.645, in the same manner as the conversion factor of the relative value fee schedule is adjusted under *Minnesota Statutes*, section 176.136. This provision does not apply to expenses under subpart 3, item E, subitem (1). The fees shall be adjusted as follows:

- A. On October 1, 1994, the fees in this part shall be increased by 1.65 percent;
- B. On October 1, 1995, the fees as adjusted in item A shall be increased by 2.64 percent;
- C. On October 1, 1996, the fees as adjusted in item B shall be increased by 3.76 percent;
- D. On October 1, 1997, the fees as adjusted in item C shall be increased by 5.53 percent; ~~and~~
- E. On October 1, 1998, the fees as adjusted in item D shall be increased by 4.70 percent; and
- F. On October 1, 1999, the fees as adjusted in item E shall be increased by 6.22 percent.

5221.4020 FORMULA FOR DETERMINING FEE SCHEDULE PAYMENT LIMITS; CONVERSION FACTOR.

[For text of subpart 1, see M.R.]

Subp. 2. **Conversion factor.** The conversion factor shall be updated annually, pursuant to *Minnesota Statutes*, section 176.136, subdivision 1a. The conversion factor for services included in parts 5221.4030 to 5221.4060 provided after October 1, 1993, is \$52.05. This initial conversion factor is annually adjusted as follows:

- A. for dates of service from October 1, 1994, to September 30, 1995: \$52.91;
- B. for dates of service from October 1, 1995, to September 30, 1996: \$54.31;
- C. for dates of service from October 1, 1996, to September 30, 1997: \$56.35;
- D. for dates of service from October 1, 1997, to September 30, 1998: \$59.47; ~~and~~
- E. for dates of service from October 1, 1998, to September 30, 1999: \$62.27; and
- F. for dates of service from October 1, 1999, to September 30, 2000: \$66.14.

As a sample calculation, the maximum fee for a new patient office examination by a physician, procedure code 99201, is 0.80 (relative value unit). This is multiplied by 52.05 (conversion factor for 1993). The total payment, excluding any applicable adjustment, would be equal to \$41.64 for the service.

Department of Natural Resources

Adopted Exempt Permanent Rules Relating to Restrictions on Designated Trout Streams and Lakes

6264.0050 RESTRICTIONS ON DESIGNATED TROUT LAKES AND STREAMS.

[For text of subpart 1, see M.R.]

Subp. 2. **Listing of designated trout lakes.** The following described lakes are designated as trout lakes:

Name	Section	Township	Range
------	---------	----------	-------

[For text of items A to H, see M.R.]

I. Cook county:

(1)	Bath Lake	5, 6 31, 32	62 63	1W 1W
(2)	Bench Lake	6	64	2E
(3)	Bingshick Lake	30, 25	65	4W, 5W
(4)	Bogus Lake	12	62	2E
(5)	Boys Lake	5, 8	62	2E
(6)	Carrot Lake	17	64	2E
(7)	Chester Lake	32, 33	64	3E
(8)	Duke Lake	30	63	1E
(9)	Dyers Lake	4, 5, 8, 9	58	5W
(10)	Esther Lake	6 31	63 64	3E 3E

(11) to (30) [Renumber as (10) to (29)]

(30)	<u>Olga Lake</u>	<u>6</u>	<u>63</u>	<u>3E</u>
	<u>(formerly Squaw)</u>	<u>31</u>	<u>64</u>	<u>3E</u>

[For text of subitems (31) to (43), see M.R.]

(44)	Squaw Lake	6	63	3E
		31	64	3E
(45)	Surber Lake	34	65	2W

(46) to (57) [Renumber as (45) to (56)]

[For text of items J to M, see M.R.]

N. ~~Meeker county:~~

	Little Mud Lake	22, 23	121	30W
--	----------------------------	-------------------	----------------	----------------

~~O.~~ Otter Tail county:

	Bass Lake	10, 11	135	42W
--	-----------	--------	-----	-----

~~P.~~

O. St. Louis county:

(1)	Alruss Lake (Also Lake county)	12	64	12W, 11W
(2)	Briar Lake	14, 15, 23	53	13W
(3)	Camp Four (Wessman) Lake	4	59	19W

KEY: PROPOSED RULES SECTION — Underlining indicates additions to existing rule language. ~~Strike outs~~ indicate deletions from existing rule language. If a proposed rule is totally new, it is designated “all new material.” **ADOPTED RULES SECTION** — Underlining indicates additions to proposed rule language. ~~Strike outs~~ indicate deletions from proposed rule language.

Exempt Rules

(4)	Cedar Lake	20	58	15W
(5)	Chant Lake	10	63	13W
(6)	Clear Lake	23	52	15W
(7)	Cub Lake	2	61	14W
(8)	Deepwater Lake	2	59	20W
(9)	Dry Lake	9	63	12W
(10)	Dry Lake, Little	9	63	12W
(11)	Elbow Lake, Little	9, 10, 16	57	18W
(12)	Embarrass Mine Pit (Lake Mine)	5, 6	58	15W
(13)	Forsyth Mine Pit	11	58	19W
(14)	Hanson Lake	36	64	13W
(15)	High Lake	3, 4, 5 33, 34	63 64	12W 12W
(16)	Jacob (Louis) Lake	11, 12	64	12W
(17)	James (Jammer) Lake	27	60	18W
(18)	Judson Mine Pit	20, 29	58	19W
(19)	Loaine (Sand) Lake	16, 17	54	12W
(20)	Miner's Mine Pit	26, 27, 28	63	12W
(21)	Mirror Lake	19, 30	52	14W
(22)	Norberg Lake	1	61	14W
(23)	Normanna Lake	7, 8	52	13W
(24)	Pickereel Lake	17	60	21W
(25)	Regenbogen Lake	18	64	12W
(26)	St. James Mine Pit	3, 4	58	15W
(27)	Spring Hole Lake	14	55	14W
(28)	Trygg (Twig) Lake	31 36	68 68	14W 15W
(29)	Twin Lake	28, 33	50	14W

[For text of subp 3, see M.R.]

Subp. 4. **Listing of designated trout streams.** The following described streams and portions of streams and their tributaries within the section specified are designated as trout streams and counties whose names appear in parentheses contain portions of those streams:

Name	Location		
	Township	Range	Section

[For text of item A, see M.R.]

B. Becker county:

[For text of subitems (1) to (6), see M.R.]

(7)	Toad River	138	38	6, 7, 18, 19, 30
		139	38	30, 31
		139	39	25, 36
		138	39	25, 26 36

[For text of items C to K, see M.R.]

L. Clay county:

Felton Creek	141	44	7, 8, 17
	141	45	7, 8, 12, 13, 14, 15, 16, 17, 18, 22
	141	46	8, 9, 12, 13, 14; 15, 16

[For text of item M, see M.R.]

N. Cook county:

[For text of subitems (1) to (4), see M.R.]

(5)	Blind Temperance Creek	60	4W	19, 29, 30, 32
		60	5W	<u>24</u> , 25, 36

[For text of subitems (6) to (12), see M.R.]

(13)	Cascade River	60	2W	1
		61	1W	19, 20, 21, <u>30</u> , <u>31</u>
		61	4W <u>2W</u>	1, 12, 13, 14, 24, 25, 26 35, 36
		62	2W	3, 10, 11, 14, 15, 16, 22, 23, 24, 25, 36
(14)	Cedar Creek	59	5W	2
		60	5W	14, 22, 23, 25, 26, 35, 36
(15)	Cliff Creek	61	2E	3, 4, 5, 9, 10
		62	2E	29, 30, 31, 32
(16)	Colville Creek, East	61	3E	5
		62	2E	25
		62	3E	30, 31, 32
(17)	Cross River (Lake)	<u>58</u>	<u>4W</u>	<u>6</u>
		58	5W	1
		<u>59</u>	<u>4W</u>	<u>31</u>
		59	5W	4, 5, 8, 9, 15, 16, 21, 22, 23, 25, 26, 35, 36
		60	5W	30, 31, 32

[For text of subitems (18) to (26), see M.R.]

(27)	Fourmile Creek (Lake)	60	5W	17, 18, 19
(28)	Fox Farm Creek	62	1E	19, 30
(29)				
<u>(28)</u>	Fry Creek	62	2W	25
		62	1W	29, 30, 31
(30)				
<u>(29)</u>	Gauthier Creek	62	3E	16, 20, 21, 22, 27
(31)				
<u>(30)</u>	Grand Portage Creek	63	5E	1
		63	6E	4, 5, 6
		64	6E	31, 32, 33
(32)				
<u>(31)</u>	Greenwood River	63	2E	1, 2, 3, 10, 11, 12, 13, 14, 15, 22, 23, 24
		64	2E	34
		63	3E	6
		64	3E	31

KEY: PROPOSED RULES SECTION — Underlining indicates additions to existing rule language. ~~Strike outs~~ indicate deletions from existing rule language. If a proposed rule is totally new, it is designated “all new material.” **ADOPTED RULES SECTION** — Underlining indicates additions to proposed rule language. ~~Strike outs~~ indicate deletions from proposed rule language.

Exempt Rules

(33)				
<u>(32)</u>	Heartbreak Creek	59	4W	18, 19
		59	5W	2, 11, 12, 13
		60	5W	27, 28, 33, 34, 35
(34)				
<u>(33)</u>	Hollow Rock Creek	63	5E	9, 10, 11, 14, 15, 16, 23, 24, 25
(35)				
<u>(34)</u>	Honeymoon Cr. (Spring Cr.)	61	4W	28, 31, 32, 33
(36)				
<u>(35)</u>	Indian Camp Creek	60	2W	3, 10, 11
		61	2W	34
(37)				
<u>(36)</u>	Irish Creek	63	3E	8, 9, 10, 13, 14, 15, 23, 24, 25, 26
		63	4E	17, 18, 19
(38)				
<u>(37)</u>	Jonvick Creek	60	2W	7, 19
		60	3W	12, 13, 14, 24
(39)				
<u>(38)</u>	Junco Creek	62	1W	1, 2, 9, 10, 11, 12, 13, 14, 15, 16, 21, 28
		62	1E	6, 7
		63	1E	20, 29, 30, 31
		63	1W	24, 25, 35
(40)				
<u>(39)</u>	Kadunce Creek	61	2E	2
		62	2E	9, 10, 12, 13, 14, 15, 16, 22, 23, 24, 26, 35
(41)				
<u>(40)</u>	Kimball Creek	61	2E	3, 4, 10
		62	2E	7, 16, 17, 18, 19, 20, 21, 28, 29, 33, 34
(42)				
<u>(41)</u>	Koski Creek	61	4W	5, 8
		62	4W	31, 32
(43)	Last Creek	58	5W	16, 17
(44)				
<u>(42)</u>	Lullaby Creek	63	1E	4, 5, 8, 9
(45) to (67) [Renumber as (43) to (65)]				
(68)	Section 15 Creek	58	5W	9, 10, 15
(69)				
<u>(66)</u>	Section 16 Creek	58	5W	16
(70)	Section 29 Creek	58	5W	29, 30
(71)				
<u>(67)</u>	Sixmile Creek	60	4W	13, 14, 15, 22, 23, 27, 28, 33

(72) to (88) [Renumber as (68) to (84)]

[For text of items O to S, see M.R.]

T. Goodhue county:				
(1)	Bullard Creek	112	14	1, 2, 3, 10
		113	14	36
(2)	Cannon River, Little	110	18	1, 10, 11, 12, 15
		111	18	13, 24, 25, 36
(3)	<u>Clear Creek</u>	<u>111</u>	<u>14</u>	<u>3, 10, 15</u>
(4)	Gilbert Creek (Wabasha)	112	12	31
(4)				
(5)	Hay Creek	111	15	4
		112	14	19
		112	15	1, 12, 13, 23, 24, 26, 27, 33, 34
		113	15	24, 25, 36
(5)				
(6)	Mazeppa Creek (Wabasha)	110	15	24, 25
(6)				
(7)	Pine Creek	112	17W	5, 6, 8, 9
(7)				
(8)	Spring Creek	112	15	5, 6, 7, 18
		113	15	29, 31, 32, 33, 34
(8)				
(9)	Trout Brook (Dakota)	112	17	1
(9)				
(10)	Trout Brook (Hay Cr. Trib.)	113	15	35, 36
(11)	<u>Unnamed Creek</u> <u>(Wells Cr. Trib #9)</u>	<u>111</u>	<u>17</u>	<u>8, 17</u>

[For text of items U to X, see M.R.]

Y. Lake county:				
(1)	Arrowhead Creek	60	8	3, 10, 11, 13, 14, 15, 22, 23, 26, 27, 28, 34
		61	8	14, 15, 21, 22, 27, 28, 34
(2)	Baptism River, Mn.Br.	56	7	3, 4, 5, 9, 10, 14, 15
		57	7	20, 27, 28, 29, 33, 34
(3)	Baptism River, E.Br.	57	6	6
		57	7	1, 2, 3, 9, 10, 11, 12, 16, 17, 20
		58	6	30, 31
		58	7	13, 17, 19, 20, 21, 22, 23, 24, 25, 26, 29, 30, 36
		58	8	22, 23, 24, 25, 26

KEY: PROPOSED RULES SECTION — Underlining indicates additions to existing rule language. ~~Strike outs~~ indicate deletions from existing rule language. If a proposed rule is totally new, it is designated “all new material.” **ADOPTED RULES SECTION** — Underlining indicates additions to proposed rule language. ~~Strike outs~~ indicate deletions from proposed rule language.

Exempt Rules

(4)	Baptism River, W.Br.	57 57 58	7 8 8	7, 17, 18, 20 1, 2, 12 2, 3, 4, 9, 10, 11, 15, 16, 20, 21, 22, 28, 33, 34, 35, 36 27 , 34, 35
		59	8	
[For text of subitems (5) to (10), see M.R.]				
(11)	<u>Cabin Creek</u>	<u>59</u>	<u>6</u>	<u>19, 20</u>
		<u>59</u>	<u>7</u>	<u>24</u>
<u>(12)</u>	Camp Creek	60	8	3, 4, 5, 7, 8, 9, 10, 16, 17, 20, 21, 29
		61	8	33
(12)				
<u>(13)</u>	Camp Creek, East	60	9	7, 18
		60	10	11, 12, 14
(13)				
<u>(14)</u>	Caribou River (Cook)	58	6	1, 2, 11, 13, 14, 15, 22, 23, 24, 25, 26, 36
		59	6	23, 24, 25, 26, 35, 36
(14)				
<u>(15)</u>	Castle Danger Creek (Campers)	54	9	30, 31, 32
(15)				
<u>(16)</u>	Cedar Creek	56	8	13, 14, 23, 24, 26
(16)				
<u>(17)</u>	Cloudy Spring Creek	57	9	5, 6, 7, 18
		57	10	12, 13, 24
(17)				
<u>(18)</u>	Cross River (Cook)	60	6	13, 24, 25, <u>36</u>
(18)				
<u>(19)</u>	Crow Creek	53	10	1, 2
		54	10	15, 22, 23, 26, 35
(19)				
<u>(20)</u>	Crown Creek	57	8	2, 3, 4, 5, 9, 10, 11
		58	8	5, 6, 7, 18, 19, 20, 29, 30, 31, 32, 33
		58	9	1, 12, 13, 14, 24, 36
		59	8	31 , 32
(20)				
<u>(21)</u>	Dago Creek	54	9	18, 19
		54	10	2, 11, 12, 13
		55	10	27, 34, 35
(21)				
<u>(22)</u>	Dragon Creek	57	6	8, 9, 16, 17, 21
(22)				
<u>(23)</u>	Egge Creek	57	7	2, 3, 4, 11
(23)				
<u>(24)</u>	Encampment River	53	10	3, 10, 11
		54	10	8, 16, 17, 21, 27, 28, 34

Exempt Rules

(24)	Fourmile Creek (Cook)	60	6	24
(25)	Gooseberry River	54	9	18, 19, 20, 21, 22, 27
		54	10	4, 5, 6, 8, 9, 10, 11, 12, 13
		55	10	4, 9, 16, 17, 20, 29, 30, 31, 32
		56	10	33
(26)	Gooseberry River, Little	54	10	6
		55	10	31
		55	11	34, 35, 36
(27)	Harris Lake Creek	60	10	6
		61	10	19, 30, 31
(28)	Hockamin Creek	57	7	17, 18, 19
		57	8	13, 16, 20, 21, 22, 23, 24, 25, 26, 27, 28, 29, 32, 33; 34
(29)	Hill Creek	60	8	<u>19, 30</u>
		60	9	24, 25
(30)	Houghtaling Creek	59	6	2, 3, 4, 5, 6
		60	6	25, 32, 33, 35, 36
(31)	Inga Creek	60	9	<u>2, 3</u>
		61	9	11, 12, 14, 22, 23, 27, 34, 35
(32)	Isabella River, Little	59	8	3, 4, 5, 6, 9, 10, <u>15, 16, 22</u>
		60	8	31, 32
		60	9	5, 6, 8, 9, 10, 15, 16, 22, 25, 26, 27, 36
		61	9	3, 4, 9, 10, 16, 17, 20, 21, 22, 29, 32
		62	9	34
(33)	Jack Creek	61	8	14, 23, 24, 25, 26, 36
(34)	Jack Pine Creek	60	8	5, 6, 7, 8, 18
		61	8	19, 20, 29, 30, 31, 32
(35)				
(34)	Kinney Creek	57	10	15, 21, 22, 28, 33
(36)				
(35)	Knife River (St. Louis)	52	11	4, 5, 8, 9, 17, 18, 19, 31
		53	11	4, 5, 7, 8, 17, 18, 20, 29, 32, 33
		54	11	20, 29, 30, 32
(37)				
(36)	Knife River, W.Br. (St. Louis)	52	11	5, 6, 8

KEY: PROPOSED RULES SECTION — Underlining indicates additions to existing rule language. ~~Strike outs~~ indicate deletions from existing rule language. If a proposed rule is totally new, it is designated “all new material.” **ADOPTED RULES SECTION** — Underlining indicates additions to proposed rule language. ~~Strike outs~~ indicate deletions from proposed rule language.

Exempt Rules

(38) (37)	Knife River, Lit., E.Br.	53	11	17, 20, 21, 22, 27, 33, 34
(39) (38)	Knife River, Lit., W.Br. (St. Louis)	52 53	11 11	5, 6 31
(40) (39)	Leppanen Creek	57	7	15, 21, 22, 28
(41) (40)	Lindstrom Creek	56 57 57	7 7 8	4 19, 30, 31, 32, 33 25
(42) (41)	Manitou River	57 58	6 6	3, 4, 10, 11 4, 5, 6, 7, 8, 16, 17, 18, 20, 21, 28, 29, 32, 33, 34
(43) (42)	Manitou River, N.Br.	58 58 59 59	6 7 6 7	6 1, 2 31 15, 16, 18, 19, 20, 21, 22, 25, 26, 27, 28, 33, 34, 35, 36
(44) (43)	Manitou River, S.Br.	58 58 59 58	6 7 7 8	6 1, 4, 5, 6, 7, 8, 9, 10, 11, 12, 16, 17, 18 29, 30, 31, 32, 33 1, 2
(45) (44)	Manitou River, Little	57 58	6 6	2 34, 35
(46) (45)	Marais River, Little	57	6	5, 8, 16, 17, 21
(47) (46)	Mary Ann Creek	58	10	16, 21
(48) (47)	Martin Creek	58	6	2, 3, 11
(49) (48)	McCarthy Creek (St. Louis)	53	11	18
(50) (49)	Mike Kelly Creek	60	11	14, 15, 23
(51) (50)	Mile Post Forty-three Cr.	56	8	2, 3, 9, 10, 11, 13, 14, 15
(52) (51)	Mink Creek	54 55 55	9 9 10	4, 5, 9 30, 31, 32 25, 26, 36
(53)				

Exempt Rules

<u>(52)</u>	Mitawan Creek	60	9	1, 12
		61	8	5, 6, 7, 18, 19, 31
		61	9	1, 2, 12, 13, 24, 25, 36
		62	9	35
(54)				
<u>(53)</u>	Moose Creek	59	6	31, 32, 33, 34
(55)				
<u>(54)</u>	Mud Creek, Little	57	11	11, 12, 14, 22, 23
(56)				
<u>(55)</u>	Murphy Creek	56	11	4, 5, 8, 17, 18, 19
		57	10	4, 7, 8, 9, 18
		57	11	11, 12 , 13, 14 , 21, 22, 23, 24, 26, 27, 28, 33, 34
(57)				
<u>(56)</u>	Nicadool Creek	56	7	7
		56	8	1, 12
		57	8	25 <u>27</u> , 35, 36
(58)				
<u>(57)</u>	Nine Mile Creek	58	6	3, 4, 9, 16, 17
		59	6	27, 28, 33, 34
(59)				
<u>(58)</u>	Nip Creek	59	11	3, 4
		60	11	21, 22, 27, 28, 34
(60)				
<u>(59)</u>	Nira Creek	61	11	22, 23, 27
(61)				
<u>(60)</u>	Oliver Creek (Silver)	57	7	5, 6
		57	8	1
		58	7	31, 32
(62)				
<u>(61)</u>	Palisade Creek	56	7	16, 17, 18, 19, 20, 21, 22
		56	8	24
(63)				
<u>(62)</u>	Rock Cut Creek	58	6	18, 19, 20
		58	7	13
(64)				
<u>(63)</u>	Sawmill Creek	57	6	18
		57	7	4 , 12, 13, 22, 23, 24, 26, 27, 34
(65)				
<u>(64)</u>	Schoolhouse Creek	58	7	35, 36
(66)				
<u>(65)</u>	Scott Creek	59	7	4
		60	7	9, 10, 15, 16, 21, 22, 27, 33, 34, 35

KEY: PROPOSED RULES SECTION — Underlining indicates additions to existing rule language. ~~Strike outs~~ indicate deletions from existing rule language. If a proposed rule is totally new, it is designated “all new material.” **ADOPTED RULES SECTION** — Underlining indicates additions to proposed rule language. ~~Strike outs~~ indicate deletions from proposed rule language.

Exempt Rules

(67) (66)	Section 30 Creek (St. Louis)	63	11	30
(68) (67)	Silver Creek	53	10	6, 7, 16, 17, 18, 21
		53	11	1
		54	10	18, 19, 30
		54	11	11, 12, 13, 25, 36
(69) (68)	Silver Creek, E.Br.	53	10	5, 8, 9, 16, 21
(70) (69)	Skunk Creek	54	9	4, 9, 16, 17, 20
		55	9	19, 29, 30, 32, 33
		55	10	13, 14, 24
(71) (70)	Snake Creek	60	9	6
		60	10	1
		61	9	19, 30, 31
		61	10	24, 25, 36
(72) (71)	Snake River	60	10	3, 4
		61	9	7, 18, 19
		61	10	12, 23, 24, 26, 27, 33 , 34
(73) (72)	Sphagnum Creek	60	9	4
		61	9	28, 29, 33
(74) (73)	Split Rock River	54	8	6, 7
		54	9	1, 2, 12
		55	9	26, 28, 34, 35, 36
(75) (74)	Split Rock River, E.Br.	55	9	4, 5, 6, 9, 10, 14, 15, 22, 23, 24, 25, 26
		56	9	30, 31, 32
		56	10	1, 11, 12, 13, 14, 23 , 24, 25
(76) (75)	Split Rock River, W.Br.	55	9	6, 7, 8, 16, 17, 21, 22, 26, 27, 28
		55	10	1
		56	10	22, 26, 27, 33, 34, 35, 36
(77) (76)	Stanley Creek (St. Louis)	52	11	18, 19
(78) (77)	Stewart River	53	10	18, 19, 20, 29
		53	11	2, 3, 10, 11, 13, 14, 15
		54	11	3, 4, 10, 15, 22, 26, 27, 34, 35
(79) (78)	Stewart River, Little	53	10	19, 20, 29
		53	11	9, 15, 16, 22, 23, 24

Exempt Rules

(80)				
<u>(79)</u>	Stewart R. (St. Louis)	55	11	7
(81)				
<u>(80)</u>	Stoney Creek (Rock)	55	9	30
		55	10	20, 23, 24, 25, 27
(82)				
<u>(81)</u>	Stream Number 30	54	8	5, 6
		55	8	19, 30, 31
(83)				
<u>(82)</u>	Sullivan Creek	56	11	1, 2, 10, 11, 15
		57	10	19, 30
		57	11	24, 25, 36
(84)				
<u>(83)</u>	Thirty-nine Cr., Big	56	8	19, 30, 31
		56	9	1, 2, 3, 9 , 11, 12, 13, 14, 15, 22, 23, 24, 25
		57	9	22, 26, 27, 35, 36
(85)				
<u>(84)</u>	Thirty-nine Cr., Little	56	8	6, 7, 8, 17, 18, 19, 20, 29, 30
		56	9	1, 12
(86)				
<u>(85)</u>	Tikkanen Creek	57	7	5, 6, 8, 16, 17
(87)				
<u>(86)</u>	Tomlinson Creek	60	7	18, 19, 31
		60	8	24, 25, 36
(88)				
<u>(87)</u>	Tower Creek	57	7	9
(89)				
<u>(88)</u>	Trappers Creek	56	11	2, 3, 9, 10, 16, 17, 19, 20
		57	11	35
(90)				
<u>(89)</u>	Twin Points Creek	54	9	10, 11, 13, 14
(91)				
<u>(90)</u>	Two Island River (Cook)	59	6	11, 12
(92)				
<u>(91)</u>	Unnamed Creek	55	8	20, 21, 29, 32, 33
(93)				
<u>(92)</u>	Unnamed Creek (S-17-6)	53	11	30, 31, 32
(94)				
<u>(93)</u>	Unnamed Creek (S-17-9)	53	11	5
		54	11	20, 29, 30, 32
(95)				
<u>(94)</u>	Victor Creek	60	9	12, 13
(96)				
<u>(95)</u>	Wanless Creek	60	6	27, 33, 34, 35, 36
(97)				
<u>(96)</u>	Weiss Creek	59	9	2, 3, 11
		60	9	27, 34

KEY: PROPOSED RULES SECTION — Underlining indicates additions to existing rule language. ~~Strike outs~~ indicate deletions from existing rule language. If a proposed rule is totally new, it is designated “all new material.” **ADOPTED RULES SECTION** — Underlining indicates additions to proposed rule language. ~~Strike outs~~ indicate deletions from proposed rule language.

Exempt Rules

~~(98)~~
(97) Wenho Creek 58 10 17, 20, 21, 27,
 28, 34

~~(99)~~
(98) Whyte Creek 57 10 1, 2, 11, 14,
 23, 26, 27, 34

[For text of items Z to DD, see M.R.]

EE. Morrison county:
 (1) Camp Ripley Brook 132 29 13, 24
 132 30 13, 24
 (2) Nelson Hay Creek 130 31 1, 2
 (3) Rock Creek, Little (Benton) 39 30 17, 18, 20, 21, 22
 39 31 13, 14, 22, 23,
 27, 33, 34

[For text of items FF and GG, see M.R.]

HH. Olmsted county:
 (1) ~~Dry Run Creek (Wabasha)~~ ~~108~~ ~~14~~ ~~4~~
~~(2)~~ Kinney Creek 105 13 1, 12, 13
 106 13 36
~~(3)~~
 (2) Logan Creek 107 11 3
~~(4)~~
 (3) Mill Creek (Fillmore) 105 11 31
 105 12 14, 23, 25, 26, 36
~~(5)~~
 (4) Whitewater R., Md.Br.
 (Winona) 106 11 2, 3, 10
 107 11 24, 25, 26, 35
~~(6)~~
 (5) Whitewater R., N.Br.
 (Winona & Wabasha) 107 11 1, 2, 3

[For text of items II to UU, see M.R.]

VV. Wabasha county:
 (1) Beaver Creek (Winona) 108 11 24
 (2) Cold Spring Brook 110 13 30, 31
 110 14 25, 36
 (3) ~~Dry Run Creek (Olmsted)~~ ~~109~~ ~~14~~ ~~33~~
~~(4)~~ Gilbert Creek ~~(Goodhue)~~ 111 12 6
 111 13 1, 2, 3, 4, 10,
 11, 12
~~(5)~~
 (4) Gorman Creek 109 11 1
 110 10 29, 30, 31
 110 11 36

(6) to (20) [Renumber as (5) to (19)]

[For text of items WW to YY, see M.R.]

ZZ. Winona county:
 (1) Ahrensfield Creek 105 8 8, 9, 16, 17,
 19, 20
 (2) Bear Creek 107 9 13, 14, 15, 16, 22
 (3) Beaver Creek (Wabasha) 108 10 15, 16, 19, 20, 21

Exempt Rules

(4)	Borson Spring	105	8	29, 32, 33
(5)	Burns Valley Cr., E.Br.	106	7	3, 10, 15
(6)	Burns Valley Cr., W.Br.	106	7	3, 4, <u>9</u> , <u>16</u>
		107	7	34
(7)	Burns Valley Cr., Mn.Br.	106	7	2
		107	7	35
(8)	Campbell Creek	105	6	21, 28, 29, 32
(9)	Cedar Valley Creek	105	6	6
		106	6	1, 11, 12, 14, 15, 21, 22, 28, 29, 31, 32
		107	6	+
(10)	Coolridge Creek	105	9	23, 26
(11)	Corey Creek	105	6	18, 19
		105	7	24, 25, 26, 27, 34
(12)	Dakota Creek	105	4	7
		105	5	1, 2, 3, 11, 12
(13)	Ferguson Creek	105	8	18
		105	9	12, 13
(14)	Garvin Brook	106	8	4, 5, 8, 17
		107	8	<u>10</u> , <u>11</u> , 14, <u>15</u> , 23, 26, 27, 33, 34, 35
(15)	Gilmore Creek	106	7	6
		107	7	20, 29, 30, 31, 32
(16)	Hemmingway Creek	105	9	26, 28, 33, 34, 35
(17)	Money Creek	105	7	3, 4, 6, 7, 8, 9, 16, 17
(18)	Peterson Creek	106	8	7, 8
(19)	Pickwick Creek	106	5	7, 18
		106	6	13, 23, 24, 26, 34, 35
(20)	Pickwick Creek, Little	106	5	18, 19, 29, 30, 32
		106	6	13
(21)	Pine Creek (Fillmore)	105	9	25, 26, 33, 34, 35
		105	8	30, 31, 32, 33
(22)	Pine Creek	105	5	18, 19, 20, 29, 30, 31, 32
		105	6	13, 36
(23)	Pine Creek, S.Fk.	105	5	19
		105	6	24
(24)	Pleasant Valley Creek	106	6	7, 18, 19
		106	7	1, 12, 13, 24, 25
(25)	Rollingstone Creek	107	8	2, 3, 4, 5, 6, 7, 9, 10, 11
		107	9	12, 13
(26)	Rollingstone Cr., Md.Br.	107	8	9, 16
(27)	Rose Valley Creek	105	5	22, 27, 34, 35
(28)	Rupprecht Creek	107	9	13, 24, 25, 26, 35

KEY: PROPOSED RULES SECTION — Underlining indicates additions to existing rule language. ~~Strike outs~~ indicate deletions from existing rule language. If a proposed rule is totally new, it is designated “all new material.” **ADOPTED RULES SECTION** — Underlining indicates additions to proposed rule language. ~~Strike outs~~ indicate deletions from proposed rule language.

Exempt Rules

(29)	Rush Creek (Fillmore)	105	8	6, 7, 18, 19, 20, 29, 32, 33
		105	9	1, 2, 12
		106	9	26, 34, 35, 36
(30)	Silver Creek (Houston)	105	6	34, 35
(31)	Speltz Creek	107	8	5, 6
		108	8	31
		108	9	36
(32)	Stockton Valley Creek	106	8	2, 3, 10, 11, 14, 23
		107	8	34
(33)	<u>Straight Creek</u>	<u>107</u>	<u>9</u>	<u>2, 11, 12</u>
(34)	Trout Run Creek (Fillmore)	105	10	18, 19, 30, 31, 32
(34)				
(35)	Trout Run-Whitewater Pk.	107	10	29
(35)				
(36)	Trout Valley Creek (Wabasha)	108	9	5, 8, 17, 20
(36)				
(37)	Unnamed Creek (Whitewater Trib.)	108	10	35, 36
(37)				
(38)	Unnamed Creek	105	7	19, 29, 30
		105	8	24
(38)				
(39)	Unnamed Creek (Miller Valley)	106	5	21, 22, 27, 28
(39)	Unnamed Creek (Richmond)	106	5	17, 20, 21

[For text of subitems (40) to (44), see M.R.]

[For text of item AAA, see M.R.]

Official Notices

Pursuant to *Minnesota Statutes* §§ 14.101, an agency must first solicit comments from the public on the subject matter of a possible rule-making proposal under active consideration within the agency by publishing a notice in the *State Register* at least 60 days before publication of a notice to adopt or a notice of hearing, and within 60 days of the effective date of any new statutory grant of required rulemaking.

The *State Register* also publishes other official notices of state agencies and non-state agencies, including notices of meetings and matters of public interest.

Department of Agriculture

Agronomy and Plant Protection Division

Notice of Public Hearing on Future ACRRRA Surcharges

ADDENDUM to Notice Published in *State Register* on August 30, 1999

- Annually, and pursuant to *Minnesota Statutes* 18E.03., Subd. 3. (1998), the Commissioner of Agriculture determines the amount of Agricultural Chemical Response and Reimbursement Account (ACRRA) surcharges to be paid by various persons to adequately fund the ACRRA Program. In a Notice published in the *State Register* on August 30, 1999, on Page 281, one of the license surcharges [Aquatic Pest Control License] was erroneously omitted from the list of surcharges to be increased. The omitted portion reads:
- **For Aquatic Pest Control license, under *Minnesota Statutes* 18B.315 (1998): forty dollars (\$40) per license.**

The ACRRA, by statute, must maintain an unencumbered balance between one million dollars (\$1,000,000) and five million dollars (\$5,000,000). The balance, after the addition of 1999 surcharges collected mostly from November, 1999 to March, 2000 is projected to be between one million (\$1,000,000) and two million dollars (\$2,000,000). Reimbursements or payments expected to be ordered by the ACRRA Board during the next year (2000) are estimated to be two million one hundred thousand dollars (\$2,100,000).

Consequently, the Minnesota Department of Agriculture (MDA) has determined that increasing the surcharge is necessary because, according to current projections, the minimum account balance can not be maintained as required by statute. The ACRRA Board by resolution at its August 18, 1999 meeting, concurs with the MDA's determination.

The MDA Commissioner and the ACRRA Board believe that notification of the determination of surcharge amounts to persons required by statute to pay surcharges is best accomplished if disclosure of such determination is done as early as possible, prior to new surcharge imposition. The majority of ACRRA surcharges for 2000, as detailed above, will not be collected until the November, 2000 to March, 2001 surcharge period.

NOTICE IS HEREBY GIVEN that a public hearing to disclose necessary changes in ACRRA surcharges will be held on October 20, 1999 at 10:30 a.m. or immediately following the regular ACRRA Board Meeting, whichever is later. The Board meeting and hearing will be held at the MDA offices in Conference Room A, 90 West Plato Boulevard, St. Paul, Minnesota.

Persons desiring further information may contact Paul Liemandt, Executive Director, ACRRA Board, at the Minnesota Department of Agriculture at 651-297-4872.

Department of Agriculture

Agronomy and Plant Protection Division

Notice of Special Local Need Registration for Super Tin 80 WP Fungicide

Pursuant to *Minnesota Statutes* 18B.27 and Parts 1505.0880-1505.0930, the Minnesota Department of Agriculture issued on August 26, 1999, a Special Local Need (SLN) registration for Super Tin 80 WP fungicide, manufactured by Griffin L.L.C., Valdosta, GA 31601. This registration would decrease the pre-harvest interval to seven days and increase the seasonal use rate to a maximum of 25 ounces per acre when applying Super Tin 80 WP to sugarbeets. A federal or state agency, a local unit of government, or any person or groups of persons filing with the commissioner a petition that contains the signatures and addresses of 500 or more individuals of legal voting age, shall have 30 days from publication of notice in the *State Register* to file written objections with the commissioner regarding the issuance of the special local need registration.

Objections may be submitted to: John C. Sierk, Minnesota Department of Agriculture, Agronomy and Plant Protection Division, 90 West Plato Boulevard, St. Paul, MN 55107. Comment deadline is October 6, 1999.

Office of the Attorney General

Consumer Education Division

Notice of Public Meeting Regarding Proposed Revisions to the Brochure - "Landlords and Tenants: Rights and Responsibilities"

Pursuant to Minnesota Statutes the Attorney General's Office will hold a public meeting regarding proposed revisions to the brochure, "Landlords and Tenants: Rights and Responsibilities." The meeting will be held on Tuesday, September 14 from 9:00-10:30 a.m. at 1400 NCL Tower (15th floor conference room), 445 Minnesota Street, St. Paul, MN 55101. If anyone attending needs a reasonable accommodation, please contact Michael Such at 651-297-5268 (voice) or 1-800-366-4812 (TTY) by Friday, September 10.

Comments are strongly preferred by mail, phone or fax. Please contact Michael Such, Assistant Consumer Information Specialist, 1400 NCL Tower, 445 Minnesota Street, St. Paul, MN 55101, for a copy of the brochure. Comments can be faxed to 651-296-9663 or called in to 651-297-5268. We would appreciate receiving your comments by phone, fax or mail by Thursday, September 16, 1999.

Department of Human Services

Finance and Management Operations - Reimbursement Division

Correction to Notice Regarding the Payment Rates for the State Regional Treatment Centers

CORRECTED NOTICE IS HEREBY GIVEN to recipients, providers of services under the Medical Assistance (MA) Program, and to the public of changes concerning the payment rates for Regional Treatment Centers under the MA Program. The notice, published in the State Register Monday 9 August 1999 (24 S.R. 213), incorrectly listed a payment rate for Ah Gwah Ching under the category 'psychopathic personality.' That payment rate, \$276, should appear under the category 'nursing facility.'

This notice is published pursuant to the Code of Federal Regulations, Title 42, section 447.205, which requires public notice of any significant proposed change in the methods and standards for setting payment rates for services. This notice is also published pursuant to 42 United States Code section 139a(a)(13) which requires the Department to publish payment rates for institutional providers, the methodologies underlying the establishment of such rates and the justification of such rates.

In conjunction with the current state fiscal year's budget for Regional Treatment Centers, as appropriated by the legislature, payment rates are determined in accordance with Minnesota Statutes, section 246.50, subdivision 5.

The following payment rates are effective from July 1, 1999 through June 30, 2000.

Facility	Payment Rates				
	Mental Illness	Mental Retardation	Traumatic Brain Injury	Psychopathic Personality	Nursing Facility
Anoka	\$379				
Brainerd	\$447	\$1077	\$829		\$272
Fergus Falls	\$528	\$683			
Eveleth	\$339				
St. Peter	\$357				
Willmar	\$501				
Cambridge		\$731			
Moose Lake				\$332	
Ah Gwah Ching					\$276

Questions and comments may be directed to:

Larry Houff
Department of Human Services
Reimbursement Division
444 Lafayette Road North
St. Paul, MN 55155-3824
651-296-4889

Department of Human Services

Notice of Request for Comments on State Plan for Temporary Assistance for Needy Families

The Personal Responsibility and Work Opportunity Reconciliation Act of 1996 (Public Law 104-193) was signed into law on August 22, 1996. The Law requires that every two years states must submit a plan to federal Department of Health and Human Services that outlines how the state intends to design and implement the federal block grant for family cash assistance. As part of the plan process, Public Law 104-193 requires that Minnesota make the plan available to local governments and private non-profit organizations for a forty-five day comment period. In order to make the plan available to as many interested individuals and groups as possible, a copy of the state plan is being published in the *State Register*.

Minnesota's legislative process and the time frames set by the federal Department of Health and Human Services do not allow for the comment period to generate any significant changes in this year's plan. However, the Minnesota Department of Human Services will review written comments when preparing policy for future legislative consideration. Send written comments on the plan to Linda Foster, Department of Human Services, 444 Lafayette Road, St. Paul, MN 55155-3834.

State of Minnesota

State Plan for Temporary Assistance for Needy Families

Minnesota's State Plan was developed in accordance with section 402 of the Social Security Act, as amended by the Personal Responsibility and Work Opportunity Reconciliation Act of 1996 (Public Law 104-193). The information submitted in the 1999 Minnesota State Plan meets the requirements of section 402 and responds to the additional requirements found in 265.9 of the Temporary Assistance for Needy Families (TANF) Program Final Rule.

A. General Provisions

- 1. Outline how Minnesota intends to conduct a program designed to serve all political subdivisions (not necessarily in the same manner) that provides assistance to needy families with (or expecting) children and provides parents with job preparation, work and support services to enable them to leave the program and become self-sufficient.**

The enactment of the Personal Responsibility and Work Opportunity Reconciliation Act (PRWORA) of 1996 allows Minnesota to continue on the path of welfare reform that began in 1994 with the implementation of the pilot of the Minnesota Family Investment Program (MFIP). From the pilot project, Minnesota modified and expanded MFIP into a statewide program.

The premise of MFIP is that work is the path to supporting a family. The program centers on work by building on jobs in today's economy and focusing on future workforce development. Job training is short term and work focused. MFIP encourages employment through simplified work incentives and personal responsibility by expecting families to actively pursue self-sufficiency. The MFIP program will move more families toward employment and self-sufficiency. Minnesota began its TANF reform program on 7/1/97 and completed implementation and conversion of cases in 4/98.

Minnesota also supports families through the Parents' Fair Share program, Family Homeless Prevention program and the Rental Assistance for Family Stabilization (RAFS) Program.

The support of families through child care assistance has been critical in Minnesota's strategy to help families leave and remain off of welfare. State funding for child care has been substantially increased so that child care services are fully forecasted in the state's budget for families receiving MFIP and participating in approved work activities. Transition Year child care is also fully funded and is available to families that exit MFIP due to increased earnings, child support or a combination of earnings and child support. The Basic Sliding Fee Child Care assistance program is available to low income working families to maintain employment and avoid welfare. The Basic Sliding Fee program is funded through a capped allocation.

Health care is a key component of welfare reform and families receiving MFIP receive medical services. Working families not on cash assistance have access to the Medical Assistance program and to MinnesotaCare, Minnesota's health care program for the uninsured.

Finally, aggressive child support efforts have led Minnesota to rank first in the nation in the average amount of child support collection per case.

- 2. Outline how Minnesota requires parents and caregivers receiving assistance under the MFIP program to engage in work upon State determination or once the parent or caregiver has received assistance for 24 months (whether or not consecutive), whichever is earlier. Outline how Minnesota will ensure that parents and caregivers receiving assistance under the program engage in work activities consistent with mandatory work requirements of section 407 of the Act.**

The overall goal of MFIP is to put participant families on the most direct path to unsubsidized employment. One parent families who are not exempt¹ from work are expected to begin work within six months of entering the program. Counties have the option of requiring work participation activities sooner. Two parent families must begin work participation activities immediately.

MFIP will move families to employment and self-sufficiency through a combination of required work activities including job search, employment plans, training and work incentives. Work activity requirements are enforced by sanctions consisting of grant reductions and vendor payments of shelter costs from the grant.

Services are provided to participants to motivate and enable them to obtain employment. Services available for participants who are designing employment plans can include, but not be limited to: job readiness assessment, job readiness assistance, job clubs, job counseling, job coaching, job skills training, work experience, subsidized employment, on-the-job training, educational programs and post employment follow-up services. The Department of Human Services and the Department of Economic Security jointly operate MFIP employment and training services.

Minor caregivers under the age of twenty who have not received a high school diploma or its equivalent will be required to engage in appropriate educational programs and will be provided with child care and supportive services to enable successful participation.

Bilingual employment and training services and work literacy language programs will be available for those lacking English proficiency, although the lack of proficiency in English will not necessarily be presumed to be a barrier to employment.

3. Outline reasonable steps the State deems necessary to restrict the use and disclosure of information about individuals and families receiving assistance under the program attributable to funds provided by the Federal Government.

Data on welfare recipients is classified as private and may not be disclosed pursuant to *Minnesota Statute* Chapter 13. Access to Minnesota's computer system, MAXIS, is defined by a security role that is attached to a person's ID and access to information is defined and limited by job responsibilities. A personal log on ID cannot be issued until the individual completes a state developed orientation course. The orientation includes a review of data privacy and ethics as they pertain to client information.

Printed reports distributed by the State are reviewed individually to ensure data provided to the requestor are appropriate for the recipient of a report.

4. Give a summary of State programs and activities directed at reducing the incidence of out-of-wedlock pregnancies and outline the State goals and actions taken to prevent and reduce the incidence of out-of-wedlock pregnancies with special emphasis on teen pregnancies. List the numerical goals for reducing the illegitimacy ratio of the State (as defined in section 403 (a)(2)(B)) for calendar years 1996 through 2005.

The number and spacing of children, as well as whether there is a two parent household, significantly affect a family's ability to achieve and sustain self-sufficiency. Of particular concern are births to teenagers because it puts the mother and child at increased risk of long term poverty.

While slowly increasing, Minnesota's 1997 out-of-wedlock birth rate of 25.1 percent compares favorably to the national rate of 32.4 percent. Minnesota's goal is to reduce this upward trend. Because of the high percentage of out-of-wedlock births to adolescents nineteen and under (18-19 year old at 82.1 percent and under 18 years at 94.2 percent), adolescents have been a population of special concern.

Public awareness campaigns, health education, non-directive counseling on birth control methods and access to family-planning services are used to reduce the number of unintended pregnancies. Since 1987, the state of Minnesota has directed additional resources to the delivery of publicly subsidized pre-pregnancy family planning services. Currently, approximately \$5 million a year is made available to over sixty local projects for public information, outreach activities, family planning counseling, pre-pregnancy family planning method services and referral and follow-up services. Minnesota's Family Planning Special Projects grant program reaches over 32,000 women at risk for unintended pregnancy.

To assist women and adolescents in locating and accessing family planning services the Minnesota Department of Health also funds a 1-800 family planning hotline. The hotline is staffed by individuals trained in reproductive health care concerns, which include birth control options. In 1998, over 8,000 calls were received by the hotline.

In 1997, 2,850 women between the ages of 15-17 became pregnant in Minnesota. This represents a slight decrease in the pregnancy rate from 1996 of 27.5/1,000 to 26.4/1,000 in 1997. This overall pregnancy rate however, masks significant disparities within populations of color. While Minnesota has one of the lowest rates of White teen pregnancy in the nation, it has the highest African American teen pregnancy rate of any state. Among 15-17 year olds, the White teen pregnancy rate is 19.5/1,000, African American 131.6/1,000, American Indian 67.7/1,000, Asian 57.3/1,000, and Hispanic 98.2/1,000.

Current activities targeting teenage pregnancy prevention include: the Office of Minority Health African American Teen Pregnancy Prevention study; access to community subsidized family planning clinics; contraceptives and counseling through school-based clinics in Minneapolis and St. Paul; state funding to support teenage parents, male responsibility, and prevention of second births to teen mothers and abstinence education. In addition, the Department of Children, Families and Learning provides grants to nine local entities, primarily school districts, that provide curricula to secondary school adolescents. The curricula focuses on preventing unintended pregnancies, including subsequent pregnancies for those who are already minor parents.

Minnesota currently has two programs specifically addressing postponing sexual involvement. Both programs have implemented an evaluation process that will determine program impact and guide program development.

5. Give a summary of Minnesota activities directed toward the encouragement of the formation and maintenance of two-parent families.

The basic structure of MFIP encourages two-parent families with the elimination of specific AFDC requirements that restricted eligibility of the second parent in the home. In addition, stepparents are included as eligible members of the assistance unit, just as natural and adoptive parents are.

Along with Minnesota's Parents' Fair Share program, two other initiatives in Minnesota encourage the involvement of non-custodial parents in the lives of their children. Hennepin County is beginning a pilot project which supports non-custodial parents by offering services geared toward promoting financial and emotional responsibility of the non-custodial parents so that they can become involved in the lives of their children. It focuses on early intervention with low income young dads to support them in efforts toward self sufficiency. Efforts include working toward advancing in employment and increasing wages. The pilot project is currently funded through the Department of Labor's Welfare-to-Work and Ford Foundation.

In addition, state funded Male Responsibility grants are issued to nine local entities for the purposes of providing information to young dads to encourage their involvement with their children and their responsibility to provide economic and other support to their children. Dads Make a Difference and the Minnesota Extension Service are both grantees under this initiative. Legislation authorized during the 1999 session requires the grantees to assist in increasing establishment of paternity and child support orders.

6. Outline how the State will conduct a program designed to reach State and local law enforcement officials, the education system and relevant counseling services, that provide education and training on the problem of statutory rape, so that teenage pregnancy prevention programs may be expanded in scope to include men.

The Children's Justice Task Force is a statewide program that deals with child abuse. The Task Force includes law enforcement officials, county attorneys and state and county child protection staff. Minnesota Sex Crimes Investigators is a group of law enforcement officials that investigate sex crimes in Minnesota. This group also works to enhance the education of the local community and works toward cooperation among the local community, state and federal agencies, and law enforcement officials.

7. Definition of Terms required by the final Federal TANF regulations.

Employed - is defined for non-assistance programs by Minnesota as working or receiving wages from working in the current quarter, or the previous quarter; or is eligible for Minnesota's Transition Year or Basic Sliding Fee child care programs.

Child - With the exception of the Diversionary Assistance and Emergency Assistance programs, (see number 8 below) Minnesota follows the federal definition of minor child found in the April 12, 1999 Final Rules and Regulations, part 260.20.

Eligible Family - a unit that meets the specific criteria of the program for which it applies and consists of individuals who live together and includes a minor child or a group of minor children related to each other as siblings, half siblings, step siblings, or adoptive siblings, together with their natural, adoptive parents, stepparents, or caregiver as defined by Minnesota law. It is also a unit consisting of a pregnant woman and if living with her, the woman's spouse.

Work Activity² - means any activity in a participant's approved employment plan that is tied to the participant's employment goal. For purposes of MFIP, any activity that is included in a participants approved employment plan meets the definition of work activity as counted under the federal participation standards. Work activity includes, but is not limited to:

- unsubsidized employment;
- subsidized private sector or public sector employment;
- work experience including CWEP and work associated with the refurbishing of publicly assisted housing if sufficient private sector employment is not available;

Official Notices

- on-the-job training as specified in *Minnesota Statute 256J.66*; (See attachment LLL)
- job search, either supervised or unsupervised;
- job readiness assistance;
- job clubs, including job search workshops;
- job placement;
- job development;
- job-related counseling;
- job coaching;
- job retention services;
- job-specific training or education;
- job skills training directly related to employment;
- the self-employment investment demonstration;
- preemployment activities, based on availability and resources, such as volunteer work, literacy programs and related activities, citizenship and English as a second language classes, or participation in dislocated worker services, chemical dependency treatment, mental health services, peer group networks, displaced homemaker programs, strength-based resiliency training, parenting education, or other programs designed to help families reach their employment goals and enhance their ability to care for their children;
- community service programs;
- vocational educational training or educational programs that can reasonably be expected to lead to employment;
- apprenticeships;
- satisfactory attendance in general educational development diploma classes or an adult diploma program;
- satisfactory attendance at a secondary school, if the participant has not received a high school diploma;
- adult basic education classes;
- internships;
- bilingual employment and training services;
- providing child care services to a participant who is working in a community service program; and
- activities included in a safety plan that is developed under *Minnesota Statute, 256J.52*, subdivision 6.

8. Name each program, the purpose of the program and a description of the major activities provided to eligible families for which the State plans to claim MOE.

Minnesota Family Investment Program (MFIP). The purpose of MFIP is to provide temporary cash (60 months or less) and food assistance to families with children or to pregnant women while the caregiver works toward becoming self-sufficient. Caregivers are expected to participate in employment service requirements. If necessary, assistance with child care costs is provided by the state while the caregiver looks for employment, works or participates in training preparatory to employment.

Minnesota State Only Cash Program. This state funded cash program provides temporary assistance (60 months or less) to families with children and pregnant women who do not meet the citizenship requirements of PRWORA, who would otherwise be eligible for TANF-funded MFIP. Caregivers are required to meet all other requirements of MFIP, including employment service requirements.

The State Only Food Program. Minnesota provides state-funded food benefits to two groups of people, both are ineligible for the federal Food Stamp program because they do not meet the citizenship requirements of PRWORA. The two groups are:

- MFIP participants who do not qualify for the federally funded food portion of the MFIP grant due to non-citizenship status. The monthly amount of assistance is equal to the food portion the non-citizens would have been eligible for under MFIP if the citizenship requirements were met.

- Non-citizens who do not receive MFIP and who do not qualify for the Food Stamp program due to citizenship requirements. They must meet all other Food Stamp eligibility requirements, and unless exempt, are subject to work provisions as well as Food Stamp Employment and Training (FSET) participation requirements. The monthly amount of assistance is equal to the food portion the non-citizens would have been eligible for under the Food Stamp program if the citizenship requirements were met. This program is known as the Minnesota Food Assistance Program (MFAP).

Tribal TANF Program. Minnesota provides the non-federal share of Tribal TANF grants for families receiving assistance under the Mille Lacs Band Tribal TANF program. This match is approximately the same rate as the state financial participation in MFIP and is for families that are categorized as “eligible families” under state and federal regulations.

Employment Services Grants. These grants are state funds provided to counties to pay for Employment Services for MFIP participants. The services include, but are not limited to job search, job club, employment related education, job retention, and job or skills upgrade.

Functional Work Literacy Program. The Functional Work Literacy program is an intensive six-month English proficiency program. It allows a person for whom lack of English is a barrier to employment to attend intensive functional literacy training for a minimum of 20 hours per week in place of the initial four weeks of twenty hours of job search.

Refugee Case Management (Grandfathered). This program uses state funds to cover the costs of enhanced bilingual employment and training services to refugees. Counties with less than one percent of the state’s MFIP refugee cases do not receive an allocation of the funds.

MFIP Child Care Assistance Program. The purpose of the MFIP Child Care Assistance program is to help caregivers who are looking for work, employed or participating in short-term training programs (less than two years) with child care costs. Child care through MFIP is available to families who have an approved job search support or employment plan under 256J.52 or meet the employment requirements under *Minnesota Statute* 119B.

Transition Year Child Care Program. The purpose of the Transition Year Child Care program is to provide help with child care costs to a family who leaves MFIP because of increased earnings, child support, or a combination of earnings and child support. Assistance is available to provide help with child care costs to for a family who is employed or who is temporarily unemployed and has an income less than 75% of the State Median Income.

Basic Sliding Fee Child Care Assistance Program. The purpose of the Basic Sliding Fee (BSF) program is to help families maintain employment and avoid the need for cash assistance through TANF. A family with income less than 75% of the State Median Income may receive assistance for children under the age of thirteen or for children with a disability, under the age of fourteen. Family members must be participating in an approved activity: job search; employment; or education/training leading to employment.

Working Family Credits. The purpose of the Minnesota Working Family Tax Credit (WFTC) program is to provide additional financial support and work incentive to low income families. The WFTC is a fully-refundable credit based on the federal Earned Income Credit. A family must be eligible for the federal Earned Income Credit to receive the Minnesota WFTC, but the amount of the credit is based on a percentage of earned income rather than a percentage of the Earned Income Credit. The credit amount ranges from approximately 20 percent to 42 percent, depending on income and family size.

Family Preservation Grants. Family Preservation Grants are intended to keep families intact by working with them to resolve issues that may otherwise require out of home placement because of a family crisis. The program aims to protect children from harm and avoid unnecessary placements in foster care while removing the barriers to effective family life. Program models are established by each county and are therefore diverse in nature. Services are intense and can last up to a maximum of 90 days. The program helps family members develop skills to cope with problems as they arise, know how to deal with family conflicts and communicate with each other, and shows parents how to nurture their children and set limits.

Diversionsary Assistance Program. The Diversionsary Assistance Program provides short-term, one-time assistance to families who, without the assistance, would likely need to apply for MFIP. The program is available to families who are not on MFIP and who have either experienced an unexpected occurrence which makes it impossible to retain or obtain employment, or when the caregiver has a temporary loss of income. To be eligible for the program the unit must include a minor child or pregnant woman and the assistance must be able to resolve the problem and enable the family to begin or retain employment.

The maximum amount of Diversionsary Assistance an eligible family can receive is the equivalent of four times the monthly amount of the MFIP transitional standard based on family size. The family cannot receive MFIP for the time period for which Diversionsary Assistance was issued and the assistance can be received only once in a thirty-six month period.

Emergency Assistance Program. The purpose of the Emergency Assistance program is to provide short-term assistance to families for housing or utilities. The family applying for assistance must include a child under the age of 21 who is living in the home or who has recently lived with the family, or a pregnant woman. The assistance issued must be able to resolve the problem and can only be issued once in a twelve month period.

9. Give a description of transitional services provided by Minnesota to families no longer on assistance due to employment.

Minnesota provides the following services to families no longer receiving MFIP or the State funded cash program due to employment:

Transition Year Child Care. A family who leaves the MFIP program because of increased earnings, child support, or a combination of earnings and child support is eligible for assistance with child care costs for up to twelve months after the family becomes ineligible.

Extended Medical Assistance. A family whose MFIP or the State only cash case is closed due to earnings from employment is eligible for up to twelve months of extended medical assistance.

Transitional Employment Services. Services such as, case management, counseling and other support services are available to clients for up to twelve months after the loss of cash assistance eligibility. Funding for transitional employment services must be obligated prior to the participant losing program eligibility.

10. Give a description of how Minnesota will reduce the amount of assistance payable to a family when an individual refuses to engage in work without good cause.

Participants who fail without good cause to comply with the work requirements are subject to sanction. The sanction becomes effective the month following the month in which a required notice was given. Each month that a participant fails to comply with the requirements is considered a separate occurrence of noncompliance. For the first occurrence of noncompliance by a participant the assistance unit's grant is reduced by ten percent of the standard of need. The reduction in the grant amount must be in effect for a minimum of one month and is removed in the month following the month that the participant returns to compliance.

For the second or subsequent occurrence of noncompliance, or when both participants in a two parent household are out of compliance at the same time, the assistance unit's shelter costs are vendor paid up to the amount of the cash portion of the MFIP grant. The residual amount of the grant after the vendor payment must be reduced by an amount equal to thirty percent of the standard of need.

11. Give a description of the procedures that Minnesota has established and is maintaining to resolve displacement complaints pursuant to section 407 (f)(3) of the Act. Include the name of the State agency with the lead responsibility for administering this provision, explanations of how the State has notified the public about these procedures, and how and individual can register a complaint.

Employed workers are protected from displacement of job assignments through a requirement for advance notification of and written concurrence of appropriate exclusive collective bargaining representatives to ensure that no job assignment results in the following:

- termination, layoff, or reduction of work hours for current employees;
- infringement of promotional opportunities of current employees;
- impairment of existing contract for services or collective bargaining agreements; or
- filling an established unfilled position vacancy, except for on-the-job training.

The procedures that Minnesota has established and is maintaining to resolve displacement complaints is in *Minnesota Statute*, Section 256J.72.

B. Special Provisions

1. Indicate whether Minnesota will treat families moving to Minnesota from another state differently from other families on the program.

Minnesota will not treat families moving to Minnesota from another state differently from other families on the program.

2. Indicate whether the State intends to provide assistance under TANF to individuals who are not citizens of the United States, and if so provide an overview of such assistance.

The state provides MFIP assistance to individuals who are legal non-citizens and who are eligible for assistance in accordance with the provisions of the Aid to Families with Dependent Children Program in effect prior to August 22, 1996. The program provides temporary (60 months or less) assistance to families with children or pregnant women. Caregivers are expected to participate and cooperate with employment service requirements. If necessary, assistance with child care costs is provided by the state while the caregiver participates in required employment activities.

3. Outline the objective criteria for the delivery of benefits and the determination of eligibility and equitable treatment, including an explanation of how the State will provide opportunities for recipients who have been adversely affected, to be heard in a State administrative appeal process.

An applicant must meet the eligibility requirements specified in Minnesota State law before receiving services or temporary assistance (*Minnesota Statutes* 256J.01 to 256J.76. All requirements under Section 408 of the Social Security Act as amended by the Personal Responsibility and Work Opportunity Reconciliation Act of 1996 are included in State law. Assistance is provided equitably to all recipients in accordance with State law and amended waivers. MFIP eliminates basis of eligibility tests, such as the 100-hour rule requirement for two parent families. The asset limit is \$2000 for applicants and \$5000 for participants. The value limit of vehicles is \$7500. There are statewide payment standards based on the number of eligible persons in the assistance unit. Caregivers who fail without good cause to comply with work requirements within the specified time will have the grant reduced and vendor paid.

There will be a 60 month lifetime limit on assistance. Exclusions from this limit are provided in certain situations, such as households in domestic violence situations.

Persons convicted of a drug offense committed after July 1, 1997 may receive cash assistance if they comply with conditions set forth in *Minnesota Statutes*, Section 256J.26.

Applicants and recipients will be notified in writing of their rights and the process to follow to secure a fair hearing. When an applicant is denied services or a participant disagrees with a county agency decision, the applicant or participant may submit a request for a hearing to the county agency or directly to the Department of Human Services Appeals Office. A state Human Services referee will conduct a hearing in person at the county office or by telephone. Decisions will be issued by the Commissioner within 90 days of the request for a hearing. Under certain conditions, a participant may continue to receive benefits pending an appeal decision. Reasonable expenses incurred by a recipient because of the appeal are reimbursed upon request. (*Minnesota Statute*, Section 256.045, Administrative and Judicial Review of Human Services Matters.)

4. Not later than one year after the date of enactment of this Act, unless the chief executive officer of the State opts out of this provision, the State shall require a parent or caretaker receiving TANF assistance for two months, is not exempt from work requirements and is not engaged in work, to participate in community service employment with the minimum hours per week to be determined by the State.

Minnesota continues to opt out of the provision that requires parents and caregivers who have received TANF assistance for two months and who are not working, to participate in community service employment.

5. Give a description of the strategies and procedures in place in Minnesota to ensure that victims of domestic violence receive appropriate alternative services. The State must describe how it:

- **screens and identifies individuals receiving TANF and MOE assistance with a history of domestic violence while maintaining confidentiality of the individuals;**
- **refers the individuals to counseling and supportive services; and**
- **provides waivers, pursuant to a determination of good cause, of normal program requirements for as long as necessary where compliance would make it more difficult to escape domestic violence.**

At application, recertification and when referred to employment services or child support, clients are provided with a self-administered screening form which allows them to self-disclose domestic abuse. This form also includes referral information about local community shelters and services.

Clients who are victims of domestic violence are required to develop a safety plan with the assistance of a domestic violence advocate, which is then approved by the county agency in order to be exempt from program requirements. Program exemptions are reviewed every three months. Clients may be exempt from the 60 month time limit indefinitely as long as they are complying with their safety plan and can be exempt from employment services requirements for up to twelve months. A client can also be granted a "good cause" exemption from cooperating with child support based on documentation of domestic violence if the pursuit of child support is likely to place the person at risk of further abuse.

The department required domestic violence and sexual abuse training for employment services providers, child support and financial workers, along with state and county supervisors, and MinnesotaCare staff the summer of 1999.

¹ Exemptions are authorized under waivers to program inconsistencies as defined in the Governor's Certification.

² The basis of Minnesota's work activities is found in the state's federally approved waiver.

Metropolitan Council

Adoption of the 2000-2002 Transportation Improvement Program (TIP) for the Twin Cities Metropolitan Area

The Metropolitan Council will adopt the 2000-2002 Transportation Improvement Program (TIP) for the Twin Cities Metropolitan Area at its September 22, 1999 meeting. The TIP includes highway, transit, bikeway, pedestrian enhancements, and air quality projects that are proposed for federal funding in the seven-county metropolitan area in the next three years. The program is prepared annually in accordance with federal requirements and must contain all projects that are to be implemented with federal funding assistance. The Council's Transportation Advisory Board (TAB) has adopted the TIP and has recommended it to the Council for adoption. The TAB held a public hearing and responded to all comments received. The meeting will be held at the Metropolitan Council offices, Mears Park Centre, 230 E. Fifth St., St. Paul on Wednesday, September 22, 1999 at 3:00 p.m., in the Council Chambers.

The TIP is prepared jointly by the Metropolitan Council and the Minnesota Department of Transportation. Projects contained in the TIP reflect the region's priorities and help implement the region's transportation plan. Projects are analyzed to determine impact on regional air quality.

Upon request, the Council will provide reasonable accommodations to persons with disabilities. Free copies of the draft 2000-2002 Transportation Improvement Program are available at the Council's Regional Data Center. Call 651-602-1140 or 651-291-0904 (TTY) to request a copy. Other materials describing the Council's transportation efforts also are available. Questions about the hearings or transportation issues may be directed to: Carl Ohrn, 651-602-1719, Metropolitan Council, 230 E. Fifth St., St. Paul, MN 55101.

Metropolitan Council

Notice of Public Hearing on Amending the Aviation Policy Plan - Land Use Compatibility Guidelines for Aircraft Noise

The Metropolitan Council will hold public hearings on its proposed amendment of the Land Use Compatibility Guidelines for Aircraft Noise found in the *Aviation Policy Plan of the Metropolitan Development Guide*. The public hearings will be held at the following times & locations:

South Suburban Hennepin County Technical College

9200 Flying Cloud Drive (Highway 212)
Eden Prairie, MN

October 12, 1999

6:30 - 7:30 p.m. Open House (Focus is on Airlake & Flying Cloud Airport communities)
7:45 Public Hearing - Conference Room 118

Fridley Middle School

6100 W. Moore Lake Drive (off Highway 65/Central Av.)
Fridley, MN

October 13, 1999

6:30 - 7:30 p.m. Open House (Focus is on Anoka Co. - Blaine & Crystal Airport communities)
7:45 Public Hearing - Cafeteria

Oakland Jr. High School

820 Manning Av. North (Washington Co. Rd. 15)
Lake Elmo, MN

October 14, 1999

6:30 - 7:30 p.m. Open House (Focus is on Lake Elmo & S. St. Paul Airport communities)
7:45 Public Hearing - Cafeteria

Persons wishing to speak at a specific hearing may register in advance by calling Jan Martin at 651-602-1758. The public hearing record will remain open through October 28, 1999, and interested parties may submit written comments on the proposed amendment to the project manager at the address listed below.

The proposed amendment is being initiated by the Council and involves a change to the Land Use Compatibility Guidelines for Aircraft Noise for the region's reliever airports. The airports affected are Airlake, Anoka Co.-Blaine, Crystal, Flying Cloud, Lake Elmo, and South St. Paul. The proposed amendment does not change existing policies; rather it:

- Changes the designated aircraft noise contour at which the land use compatibility guidelines begin to be applied. The guidelines currently start at the DNL55 noise level. The amendment would apply the guidelines at the higher DNL60 noise level.
- Modifies descriptive text associated with the noise level change and modifies existing approved noise contours or incorporates new airport noise contours as they are updated.

Key objectives of the amendment are to maintain an adequate margin of noise safety in the land use compatibility guidelines, make the reliever airports consistent with policy and practices as applied at the region's Major and Intermediate airports, and simplify interpretation and implementation for local communities. Changes may affect the standards for determining projects of metropolitan significance in the metropolitan significance rules.

All comments must be received by 4:30 p.m., **Thursday, October 28, 1999**. Public input can occur through meetings of the Council and its Committees, and the public hearing process. Upon request, the Council will make reasonable accommodations for people with disabilities.

Copies of the draft amendment document (publication no. 35-99-016) are available from the Council's Regional Data Center at 651-602-1140 or 651-291-0904 (TTY). Copies are also available for review at major public libraries in the Twin Cities area.

In addition, comments can be conveyed to the Council as follows:

- Written comments to: Chauncey Case, Metropolitan Council, 230 East Fifth St., St. Paul, MN 55101;
- FAX comments to 651-602-1739;
- Record comments on Council's Public Comment Line at 651-602-1500;
- E-Mail comments to: data.center@metc.state.mn.us

Public Employees Retirement Association

Notice of Meeting of the Board of Trustees

The regular meeting of the Board of Trustees of the Public Employees Retirement Association (PERA) will be held on Thursday, September 9, 1999, at 9:30 a.m., in the PERA offices, 514 St. Peter Street, Suite 200 - Skyway Level, Saint Paul, Minnesota.

Department of Trade and Economic Development

Request for Comments on State Business Regulations

Laws 1999, Chapter 223, Article 2, Sec. 77 provides:

Section 77. REPORT.

The commissioner of the department of trade and economic development shall submit a report to the legislature reviewing business regulations contained in *Minnesota Statutes* and *Minnesota Rules* that have a positive or negative impact on the business climate in Minnesota. The commissioner shall submit the report to the legislature under *Minnesota Statutes*, section 3.195, by February 15, 2000.

To assist in that review the department is seeking comments from interested and affected parties on business regulations and their positive or negative impact on Minnesota's business climate. The department will use those comments in preparation of an analysis to include, but not necessarily be limited to: a general list of regulations for which comments were received and the identified impacts; an identification of the degree to which regulations affect businesses of different sizes, locations, industries; the relationship of comments to known information about industry structure and business competitiveness.

That analysis will serve to guide recommendations to be prepared by the Department of Trade and Economic Development on possible state action to reduce negative impacts and increase positive ones. These recommendations may take the form of draft legislation, proposals for new, or amendment or repeal of existing, rules; draft policy guidance for legislative or executive branch consideration; suggestions for further study; or other forms.

Official Notices

For purpose of comments, review, analysis and recommendations the following definitions will be used:

“Business regulations” means any statute, rule, program or policy of the State of Minnesota that authorizes a state agency to take action or withhold action affecting the rights or duties of a business in Minnesota. Such actions include, but are not limited to, licensing, standard setting, rate making, rulemaking, inspecting, enforcing, adjudicating, collecting revenue from taxes or fees, making grants or loans, determining the eligibility for and delivering any government benefits. Such actions may be specific to specific industries, types of business or business activities (for example the licensing of health facilities or nursing homes) or may cut across industry and business lines (for example, environmental permitting).

“Business climate” means the perception by one or more business of the manner or degree to which competitiveness, revenues or productivity are affected by any regulation, as defined above, or combination of regulations.

“Positive impact” means the perception by one or more businesses that a regulation enhances the competitiveness, revenues or profitability of a business in Minnesota.

“Negative impact” means the perception by one or more businesses that a regulation restricts the competitiveness, revenues or profitability of a business in Minnesota.

Period of response.

Comments must be received by 5:00 PM on December 01, 1999.

Format for response.

No specific form of written or oral response is required; however, to facilitate understanding and analysis of responses, respondents are asked to:

- Describe their company and/or industry.
- Describe the specific ways in which the statute, rule, program or policy of the State of Minnesota enhances or restricts the competitiveness, revenues, or profitability of the company or industry.
- Quantify the impact in dollar terms if possible.
- Reference the specific statute, rule, program or policy including legal citation, if known.
- All respondents, including those responding by e-mail, should include their actual name and U.S. mailing address. Persons responding on behalf of corporate or other legal entities should be sure to identify both the entity’s name and address and their own name and position.

Methods of response.

Written comments by mail, fax, or other methods of physical delivery. Comments should be addressed to Charles A. Schaffer, Minnesota Department of Trade and Economic Development, 500 Metro Square, 121 7th Place East, St. Paul, Minnesota 55101-2146, FAX 651-296-1290.

Written comments by e-mail. Effective September 15, 1999, the department has established a dedicated electronic mailbox for receipt of comments at: dted.regrev@state.mn.us. Comments received electronically will be available for viewing at the department’s web site at www.dted.state.mn.us (click on “Business” and then on “News and Information.”)

Public meetings. The department will conduct six public meetings to allow for in person presentation of comments. A record of each meeting will be made and this together with written comments received will form the record for conduct of analysis and making of recommendations.

The schedule of those meetings is:

- September 27, 1999, 1:00 p.m. to 4:00 p.m., Travel Lodge, 3027 Frontage Road South, Moorhead, Minnesota.
- September 29, 1999, 9:00 a.m. to 12:00 p.m., University of St. Thomas, Room 351, 1000 LaSalle Avenue, Minneapolis, Minnesota.
- October 4, 1999, 1:00 p.m. to 4:00 p.m., University of Minnesota-Duluth, Room 140, School of Business and Economics.
- October 7, 1999, 1:00 p.m. to 4:00 p.m., St. Cloud State University, Whitney Senior Center, 1527 Northway Drive, St. Cloud, Minnesota.
- October 11, 1999, 1:00 p.m. to 4:00 p.m., Southwest State University, Student Center Rooms 158-59, Marshall, Minnesota.
- October 26, 1999, 1:00 p.m. to 4:00 p.m., Central Lakes College, Room E203, Brainerd, Minnesota.

Parties desiring to offer comments at the meetings are requested to contact DTED at (651) 282-2103 not later than one week before the meeting so all parties wishing to speak can be accommodated.

All comments received will be public information under the Minnesota Data Practices Act (*Minnesota Statutes* Chapter 13).

State Grants & Loans

In addition to requests by state agencies for technical/professional services (published in the State Contracts section), the *State Register* also publishes notices about grants and loans available through any agency or branch of state government. Although some grant and loan programs specifically require printing in a statewide publication such as the *State Register*, there is no requirement for publication in the *State Register* itself.

Agencies are encouraged to publish grant and loan notices, and to provide financial estimates as well as sufficient time for interested parties to respond.

Department of Human Services

Notice of Request for Proposals to Develop a Family Group Decision Making Process

The Minnesota Department of Human Services has issued a request for proposals (RFP) to county and tribal social service agencies. The RFP is to develop family group decision making process as an option for families when a child is in out-of-home placement by juvenile or delinquency court order. Although the applicants and grantees must be a county or tribal social services agencies, the involvement of other community agencies is encouraged. Community agencies who are interested in this project should call their local county or tribal social services agency for more information about the RFP and to determine if the county or tribal social services agency is planning to submit a proposal.

Department of Public Safety

Office of Drug Policy and Violence Prevention

Notice of Availability of Funds for Criminal Gang Strike Force Officer Replacement

NOTICE OF AVAILABILITY OF FUNDS. The Minnesota Department of Public Safety announces the availability of funds to reimburse local law enforcement agencies for the costs associated with hiring an officer to replace an officer assigned to the Gang Strike Force. A total of \$1,600,000.00 is made available through the Minnesota Omnibus Crime Act of 1999 and *Minnesota 1997 Session Laws*, Chapter 239. Local law enforcement agencies may apply. The deadline for grant submission is 4:00 P.M. October 15, 1999. To receive an application contact:

Nancy Franke
Office of Drug Policy and Violence Prevention
Minnesota Department of Public Safety
444 Cedar Street
Suite 100 Town Square
St. Paul, MN 55101
Telephone: 651-284-3334
TTY: 651-282-6555

Department of Public Safety

Office of Drug Policy and Violence Prevention

Notice of Availability of Funds for Expanding Local Capacity to Combat Gangs

NOTICE OF AVAILABILITY OF FUNDS. The Minnesota Department of Public Safety announces the availability of funds to local law enforcement agencies and city and county attorneys' offices to expand the capacity of the agency or office to successfully investigate and prosecute crimes committed by criminal gangs. A total of \$2,000,000.00 is made available through the Minnesota Omnibus Crime Act of 1999 and *Minnesota 1997 Session Laws*, Chapter 239. Local law enforcement agencies, city and county attorneys' offices may apply. The deadline for grant submission is 4:00 P.M. October 15, 1999. To receive an application contact:

Nancy Franke
Office of Drug Policy and Violence Prevention
Minnesota Department of Public Safety
444 Cedar Street
Suite 100 Town Square
St. Paul, MN 55101
Telephone: 651-284-3334
TTY: 651-282-6555

Professional, Technical & Consulting Contracts

Department of Administration procedures require that notice of any consultant services contract or professional and technical services contract which has an estimated cost of over \$10,000 be printed in the *State Register*. These procedures also require that the following information be included in the notice: name of contact person, agency name and address, description of project and tasks, cost estimate, and final submission date of completed contract proposal. Certain quasi-state agencies are exempted from some of the provisions of this statute.

In accordance with *Minnesota Rules* Part 1230.1910, certified Targeted Group Businesses and individuals submitting proposals as prime contractors shall receive the equivalent of a 6% preference in the evaluation of their proposal. For information regarding certification, call the Materials Management Helpline (651) 296-2600 or [TTY (651) 297-5353 and ask for 296-2600].

Perpich Center for Arts Education

Notice of Request for Proposal for a Research and Development Project Consultant for Research, Assessment and Curriculum

The Perpich Center for Arts Education is seeking proposals from qualified individuals or organizations to research, develop, and facilitate implementation of best practices in arts education. The individual or organization contracted will have demonstrated K-12 teaching experience, and experience with the MN Profile of Learning, developing effective assessment tasks in the arts, facilitating professional growth of teachers in best practices of instruction, curriculum and assessment on a broad, statewide basis. Direct experience in researching and developing arts education programs for teachers, artists and students is preferred.

The specific services to be provided under this contract are outlined in detail in the Research, Assessment & Curriculum Request for Proposal (RFP) Statement of Project Scope and Tasks. The formal RFP may be requested from:

Pamela Paulson, Ph.D., Director, Research, Assessment & Curriculum
Perpich Center for Arts Education
6125 Olson Memorial Highway
Golden Valley, Minnesota 55422
612-591-4708 or 1-800-657-3515 (toll free)

Services are to be provided during the contract period, November 1, 1999 to June 30, 2001, which involves two Phases to correspond with fiscal year budgets. Phase I (November 1, 1999 to June 30, 2000) involves development of Arts Best Practice Network and related services and materials. Phase II (July 1, 2000 to June 30, 2001) involves implementing year two of the Best Practice Network, preparing materials, writing reports for documentation and dissemination. Contractor must provide services for both Phase I and Phase II. It is anticipated that the cost of the contracted services described in the Request for Proposal will not exceed a total of \$80,000 for the contract dates indicated.

The deadline for submission of proposals is 4:00 p.m., September 20, 1999. Faxed proposals will not be considered. It is anticipated selections will be made by September 30, 1999. Proposals must be submitted to Pamela Paulson, Ph.D., Director Research, Assessment & Curriculum.

Colleges and Universities, Minnesota State (MnSCU)

Rainy River Community College

Request for Proposals for Window Renovation Project

Project ID number 991968

Sealed Proposals for **Window Renovation Project** will be received by Brenda Nicholson - Business Manager

Rainy River Community College
1501 West Hwy. 71
International Falls, MN 56649
218-285-2203
bnicholson@rrcc.mnscu.edu

until 4:00 p.m., October 1, 1999, at which time the proposals will be opened and publicly read aloud.

Professional, Technical & Consulting Contracts

Proposal Forms, Contract Documents, Plans and Specifications as prepared by the Anderson Glass Company are on file at the office of:

- 1.) Rainy River Community College
- 2.) Builders Exchange: Fargo-Moorhead-Bemidji, Fargo ND, Minneapolis, St. Paul
- 3.) Dodge Plan Room
- 4.) Construction Bulletin Plan Room
- 5.) National Association of Minority Contractors of Minnesota.

Sets of Proposal Forms and Plans and Specifications for use by contractors in submitting a bid may be obtained without a deposit at Rainy River Community College.

Each bid which totals over \$15,000.00 must be accompanied by either a certified check, payable to Rainy River Community College, in the sum of not less than five percent (5%) of the total bid, or a corporate surety bond for the same amount by a surety company authorized to do business in the State of Minnesota.

A pre-bid meeting will be held at 9:00 a.m., Wednesday, September 15, 1999, in the Administration Conference Room, Rainy River Community College.

Colleges and Universities, Minnesota State (MnSCU) St. Cloud State University

Proposals Sought for Ice Resurfacer Machine

Sealed proposals for items hereinafter described will be received by St. Cloud State University at the Business Office, St. Cloud State University, St. Cloud, Minnesota until **3:00 P.M. on SEPTEMBER 21, 1999** and will then be publicly opened and read aloud. The right is reserved to accept or reject any or all bids or parts of bids and to waive informalities therein.

Bids are requested on **ICE RESURFACER MACHINE** as per plans and specifications available in the Business Office, St. Cloud State University.

For Further information contact:

Lisa Sparks
Director of Purchasing
St. Cloud State University
720 4th Ave. S.
St. Cloud, MN 56301-4498
Phone: 320-255-4788

Department of Employee Relations

Notice of Request for Proposal for Long-term Care Insurance Vendors

The Minnesota Department of Employee Relations (DOER) is requesting proposals from vendors to provide optional long-term care insurance coverage to State of Minnesota employees, elected officials, their spouses, and their parents. A complete Request for Proposal containing further details may be obtained by e-mailing the project coordinator at Paul.Strebe@state.mn.us or by calling 651-282-2438. A proposers' conference is scheduled for 9:00 a.m. on Thursday, September 30, 1999 at the Centennial Office Building at 658 Cedar St. in St. Paul, Minnesota. Attendance is not mandatory. A list of questions and answers will be distributed to interested parties after the conference. The deadline for submitting proposals is 3:00 p.m., Wednesday, October 20, 1999.

Professional, Technical & Consulting Contracts

Department of Natural Resources

Request for Proposals for Design, Fabrication, and Installation of Interpretive Children's Exhibits at the International Wolf Center-Ely, Minnesota

The International Wolf Center in cooperation with the Minnesota Department of Natural Resources, wishes to contract for the design, fabrication, and installation of interpretive children's exhibits for the International Wolf Center's educational facility in Ely, Minnesota.

This request for proposal does not obligate the state to complete the proposed project, and the state reserves the right to cancel the solicitation if it is considered to be in its best interest.

A. Statement of Purpose

The mission of the International Wolf Center is to support the survival of the wolf around the world by teaching about its life, its association with other species and its dynamic relationships to humans.

This project will result in a hands-on, experiential exhibit area(s) for children that enhances their museum experience at the Center and conveys information about wolves consistent with the mission of the Center and appropriate to the age for which the exhibit is designed.

B. Goals and Objectives

General Goals: increase visitation to the facility, target children and family needs, involve Wolf Center staff and volunteers in the planning and creatively educate and engage children while they learn about wolves.

Project Goals: fulfill the bonding requirement to design, fabricate and install hands-on, experiential exhibits that children and their parents will enjoy and learn from, that enhance the visitor experience, and that are consistent with the Center's non-advocacy, educational mission supporting the survival of wolves.

Exhibit Design Objectives:

Exhibits will have the characteristics of an interpretive exhibit: They will provoke, relate, reveal and make a significant educational point.

Exhibits will offer a diversity of exhibit load types with some active and interactive components in a planned pattern.

Exhibits will be interactive where possible and appropriate but requiring low maintenance and repair.

Exhibits will attract, hold and communicate to visitors with a minimum of text.

A portion of the exhibits will be designed to be changeable and updated by staff.

The exhibits will be planned to be an integral part of the "Center experience" including the Wolves and Humans Exhibit, viewing areas for the resident pack of wolves, and the programs and presentations. These components should be reviewed to determine whether some children's exhibits can be incorporated. Planning should include consideration of two additional traveling exhibit projects.

C. Major tasks

1. Meet with Center staff and volunteers, and other resource people (Children's/Science Museum representatives) to develop and finalize specific exhibit objectives, themes, layout, time line and approaches (degree of sophistication/ interactivity/etc.). This should include at least one site visit to the Center's educational facility in Ely.
2. Develop a floor plan depicting elements of the exhibit.
3. Incorporate a plan for lighting and electrical requirements which will need to be a part of the project.
4. Develop an exhibit outline.
5. Develop designs and concepts. Identify phases or additional displays or a-v components that may be added in the future.
6. Develop and locate graphics.
7. Write final exhibit text.
8. Produce construction drawings as necessary in order to fabricate the exhibits.
9. Install exhibits, electrical and lighting.
10. Provide evaluation tool for exhibits.
11. Make necessary modifications to exhibits and repair/replace any exhibit damaged as a result of workmanship or material failure within one year of installation.
12. Responders may propose additional tasks or activities if they will substantially improve the results of the project.

Professional, Technical & Consulting Contracts

D. Project Contacts:

Walter M. Medwid, International Wolf Center, Administrative Offices, 5930 Brooklyn Blvd., Minneapolis, MN 55429. 612-560-7374; FAX: 612-560-7368; Email: wmedwid@wolf.org

E. Submission of Proposals

All proposals must be sent to and received by: **4:00 PM on SEPTEMBER 30, 1999**

Walter M. Medwid
International Wolf Center
5930 Brooklyn Blvd.
Minneapolis, MN 55429

Chuck French, Supervising Architect
State of Minnesota
Department of Natural Resources
BOE-Architecture
500 Lafayette Rd.
St. Paul, MN 55155-4029

Submit 5 copies of proposals to the Wolf Center; one to Chuck French. Proposals are to be sealed in mailing envelopes or packages with the responder's name and address clearly written on the outside. Each copy of the proposal must be signed, in ink, by an authorized member of the firm. Prices and terms of the proposal as stated must be valid for the length of any resulting contract.

F. Project Costs

The Department has determined that the cost of the project will not exceed: \$20,250 for design/planning services and \$135,000 for fabrication, installation and electrical/lighting.

G. Project Completion date:

The project will be completed in the following phases:

Phase 1-tasks 1 through 4 - 8 calendar weeks from notice to proceed

Phase 2-tasks 5 through 8 - 12 calendar weeks from acceptance of Phase 1

Phase 3-tasks 9 through 12 - 15 calendar weeks from acceptance of Phase 2

H. Proposal Contents

The following will be considered minimum contents of the proposal:

1. A restatement of the objectives and goals to demonstrate the responder's view of the nature of the project.
2. Identification and description of the deliverables to be provided by the responder.
3. An outline of the responder's background and experience with particular emphasis on local, state, and federal work. Identification of project personnel with details on training and work experience. Note training and work experience in interpretive exhibits and projects and the number of projects completed within the last four years. Change in personnel assigned to the project will not be permitted without the approval of the project manager.
4. A detailed cost and work plan that will identify the major tasks to be accomplished and be used as a scheduling tool, as well as the basis for invoicing.
5. Identification of the level of the Wolf Center or DNR's participation in the project as well as any other services to be provided by the Center or department.
6. Examples of work to include slide or photo of interpretive exhibit(s) accompanied by examples of exhibit objectives and an example of exhibit copy.

Professional, Technical & Consulting Contracts

Department of Natural Resources

Request for Proposals for a Study to Evaluate the Effects of Replacing the State's Payment in Lieu of Taxes Program (PILT) With Ad Valorem Payments

The Minnesota Department of Natural Resources, Commissioner's Office is seeking proposals for a study to provide a better understanding of the fiscal impacts that may be expected resulting from a change in the state's "payment in lieu of taxes" (PILT) program.

The objectives of this solicitation shall be achieved by completion of the following two subprojects:

Subproject 1. An update to the 1994 study entitled "*Payment in Lieu of Taxes Study*", conducted by, and available from the Department of Natural Resources, and

Subproject 2. An estimate of the fiscal impacts of transferring the administration of Consolidated Conservation Land from the state to the counties. This subproject shall analyze the effects a proposed change in statute would have on the seven counties that have Consolidated Conservation districts.

To obtain a copy of the complete Request for Proposals please contact:

Wayne Edgerton
Agricultural Policy Director
Office of the Commissioner
Minnesota Department of Natural Resources
500 Lafayette Road
St. Paul, MN 55155
651-297-8341
wayne.edgerton@dnr.state.mn.us

Responses are due no later than 2:00 PM, October 1, 1999.

Public Employees Retirement Association

Request for Proposals (RFP) for Professional and Technical Services to Facilitate an Implementation of a Benefit Payment and DCP Investment System

The Public Employees Retirement Association (PERA) is soliciting proposals from qualified vendors interested in providing professional and technical support services and expertise to facilitate implementation of two critical business subsystems. The purpose of the project is to design, develop test and deploy object oriented client server systems and hardware that replace PERA's remaining legacy applications. This contract is expected to last for a period of 18 to 24 months.

The benefit payment system provides the ability to create, manage and pay a wide variety of claims to over 50,000 monthly benefit recipients and 7,000 annual refund recipients. Coupled with other existing systems, the benefit payment system must provide the ability to easily establish payee accounts and periodic or non-periodic payments.

The DCP Investment system exists to manage the accounts of members that participate in PERA's defined contribution plan. This plan has approximately 4,000 active members including ambulance personal, physicians and elected officials.

PERA is seeking a primary contractor to provide support services and expertise in the following areas:

- Project management coordination and leadership
- Process improvement and business systems design
- Object oriented analysis, design and development
- Testing
- Documentation and training
- Data conversion and interfaces
- Implementation and post implementation support

Professional, Technical & Consulting Contracts

Details are contained in a Request for Proposal. This information may be obtained through the Internet at <http://www.mnpera.org/rfp/rfpindex.htm> or by calling:

Sally Kupferschmidt
Public Employees Retirement Association
514 St. Peter Street, Suite 200
St. Paul, MN 55102
Telephone: 612-296-7489
FAX: 612-297-2547
E-mail: sally.kupferschmidt@state.mn.us (to ensure receipt, e-mail requests will be acknowledged)

The deadline for proposal submission is 4:00 p.m. on October 1, 1999. Late submissions will not be considered.

Department of Public Safety

Office of Communications

Notice of Request for Proposals for Creative Professional Services for 2000 Motorcycle Safety Public Information and Education Campaign

The Minnesota Department of Public Safety's (DPS) Office of Communications is seeking proposals for creative professional services for assistance in producing concepts for print and electronic media on the hazards of riding motorcycles while impaired. A detailed description of the contractor's responsibilities is outlined in the *Requests for Proposals*, which may be obtained by contacting Fancy Trice at the address or phone number below.

Contact: Fancy Trice
Telephone: 651-297-1765
TTY: 651- 282-6555
Address: Office of Communications
Minnesota Department of Public Safety
444 Cedar Street, Suite 155, Town Square
St. Paul, MN 55101-5155

This is the only person designated to answer questions regarding this request for proposals. Estimated total cost of the contract is \$57,500.00. Final date for submitting proposals is 1:00 p.m. on Tuesday, September 27, 1999. The Department of Public Safety will retain an option to extend the contract for two additional one-year periods. The value of the contract for any subsequent year may be adjusted.

Non-State Public Bids, Contracts & Grants

The *State Register* also serves as a central marketplace for contracts let out on bid by the public sector. The *Register* meets state and federal guidelines for statewide circulation of public notices. Any tax-supported institution or government jurisdiction may advertise contracts and requests for proposals from the private sector.

It is recommended that contracts and RFPs include the following: 1) name of contact person; 2) institution name, address, and telephone number; 3) brief description of project and tasks; 4) cost estimate; and 5) final submission date of completed contract proposal. Allow at least three weeks from publication date (four weeks from date article is submitted for publication). Surveys show that subscribers are interested in hearing about contracts for estimates as low as \$1,000. Contact the editor for further details.

Metropolitan Airports Commission

Notice of Call for Bids for Lease and Rental of Snow Removal Equipment with Operators at Minneapolis-Saint Paul International Airport

Sealed bids will be received by the Metropolitan Airports Commission at its office at 6040 28th Avenue South, Minneapolis, MN 55450-2799, until 2:00 PM, Local Time, TUESDAY, September 21, 1999, for the lease and rental of Snow removal equipment with operators using 4 x 4 vehicles, skid steers, and articulated loaders. At that time and place the bids will be publicly opened and the names and address and prices of those responding will be read aloud.

The mailing address is, MAC Purchasing Department, 6040 28th Avenue South, Minneapolis, MN 55450, and ***bids to be considered must be received by the Commission and time stamped at the front reception desk by the date and hour set for opening of those bids. LATE BIDS WILL NOT BE ACCEPTED.***

Bids shall be according to the specifications. The Commission reserves the right to reject any or all proposals or portions thereof, and to waive any minor irregularities or informalities therein. Copies of the Specifications may be obtained at the office of the Commission, 6040 - 28th Avenue South, Minneapolis, Minnesota 55450 (phone: 612-726-8146 or 726-8147).

Dated: 1 September 1999

Metropolitan Airports Commission
JoAnn Brown, Buyer

Metropolitan Airports Commission

Notice of Call for Proposals for Secured Access System at Minneapolis-Saint Paul International Airport

Sealed proposals will be received by the Metropolitan Airports Commission at its office at 6040 28th Avenue South, Minneapolis, MN 55450-2799, until 3:00 PM, Local Time, MONDAY, September 20, 1999, for the procurement of SECURED ACCESS CONTROL SYSTEM SOFTWARE AT MSP. At that time and place the proposals will be publicly opened and the names and address of those responding read aloud. The mailing address is, MAC Purchasing Department, 6040 28th Avenue South, Minneapolis, MN 55450, and ***proposals to be considered must be received by the Commission and time stamped at the front reception desk by the date and hour set for opening of proposals. LATE PROPOSALS WILL NOT BE ACCEPTED.***

A ***MANDATORY*** pre-proposal teleconference will be held at 10:30 AM, Minnesota time, Friday, SEPTEMBER 10, 1999. Prospective proposers must request teleconference instructions from Gordon Longton at 612-726-5404 or via FAX at 612-725-6185 no later than 4:30 PM, Local Time, Thursday, SEPTEMBER 9, 1999. You must provide your company name, contact person, and FAX number so instructions can be forwarded to you. Failure to participate in this meeting will result in rejection of the proposal.

Proposals shall be according to the specifications. The Commission reserves the right to reject any or all proposals or portions thereof, and to waive any minor irregularities or informalities therein. Copies of the Specifications may be obtained at the office of the Commission, 6040 - 28th Avenue South, Minneapolis, Minnesota 55450 (phone: 612-726-8163).

Dated: 31 August 1999

Metropolitan Airports Commission
Andrea Bolstad, Associate Buyer

Metropolitan Council

Notice of Request for Proposals (RFP) for Construction Testing Services

The Metropolitan Council is requesting proposals for testing services for the site preparation construction phase of the East Metro Transit Facility. Work includes soils and compaction testing, contaminated soils testing during excavation, and preparation/implementation of the Site Health and Safety Plan. This Work has a Disadvantaged Business Enterprise (DBE) goal of 10%.

A tentative schedule for consultant selection is:

Receive letters of interest	September 1999
Issue Request for Proposals	September 1999
Receive Proposals	September 1999
Evaluate and Rank Proposals	October 1999
Metropolitan Council authorization	October 1999
Contract negotiated, executed, NTP	October 1999

RFP documents will be available September 13, 1999. RFP documents may be obtained at a non-refundable cost of \$50 per set. All firms interested in being considered for this project and desiring to receive a RFP package are invited to submit a Letter of Interest with fee payment to:

Administrative Assistant, Contracts and Procurement Unit
Metropolitan Council Environmental Services
230 East Fifth Street
Mears Park Centre
St. Paul, MN 55101

Inquiries regarding this project, including requests to examine the RFP documents, should be directed to Arlene McCarthy at 651-602-1278.

Minnesota Statutes, Sections 473.144 and 363.073, and *Minnesota Rules*, Parts 5000.3400 to 5000.3600 will be incorporated into any contract based upon the Proposal or any modifications to it. If a contract for the period is awarded in excess of \$100,000, the requirements of *Minnesota Rules* 5000.3530 will be applicable.

PrimeWest Health System

Professional Services Sought for Vendor to Provide Pharmacy Benefit Management Services

NOTICE IS HEREBY GIVEN that the Counties of Big Stone, Douglas, Grant, McLeod, Meeker, Pipestone, Pope, Renville, Stevens and Traverse have formed a joint powers agreement in order to create a managed Medicaid program. The joint powers entity, PrimeWest Health System, will be responsible for providing healthcare goods and services to Medical Assistance (MA) and General Assistance Medical Care (GAMC) clients residing in PrimeWest's member counties on a prepaid basis.

In order to facilitate the day-to-day operations of this new pre-paid model, PrimeWest Health System is seeking a vendor to provide pharmacy benefit management (PBM) services. This vendor will serve at the direction of the PrimeWest governing board and CEO.

Core responsibilities of the PBM will include: pharmacy network development and maintenance, pharmacy claims processing, and drug utilization review. PrimeWest does not wish to share risk with its PBM vendor.

PrimeWest's enrollee base will consist of approximately 9,000 persons, and the projected annual budget of the Initiative will be in the \$25 million range. Care delivery is expected to begin by mid-2000, with enrollment to start approximately three months prior.

Final responses must be received by 5:00 p.m., October 1, 1999. Interested parties may obtain full copies of the RFP from Eric Snyder, PrimeWest Executive Director at 320-523-3491.

Non-State Public Bids, Contracts & Grants

University of Minnesota

Notice of Bid Information Service (BIS) Available for All Potential Vendors

The University of Minnesota offers 24 hour/day, 7 day/week access to all Request for Bids/Proposals through its web based Bid Information Services (BIS). Subscriptions to BIS are \$75/year. Visit our web site at bidinfo.umn.edu or call the BIS Coordinator at 612-625-5534.

Requests for Bids/Proposals are available to the public at no charge each business day from 8:00 a.m. to 4:30 p.m. in Purchasing Services lobby, Suite 560, 1300 S. 2nd Street, Mpls., MN 55454.

University of Minnesota

Twin Cities Campus

Advertising for Bid for University of Minnesota Ice Hockey Arena and Tennis Center - U of M Project No. 181-96-1569

The University of Minnesota is requesting bids for the construction of a new 165,000 square foot indoor Hockey and Tennis Facility on the Twin Cities East Bank Campus. This facility is located immediately west of the existing Mariucci Arena between 4th and 5th Streets and 17th Avenue and Oak Streets. The facility constructed of steel frame, masonry and precast concrete exterior and masonry/drywall interior houses a 3,000 seat 85' x 200' ice rink and ten indoor tennis courts. Exterior amenities include eight outdoor tennis courts, landscaping and hardscape.

Construction Schedule: November, 1999 through February, 2001.

RESPONDING GENERAL CONTRACTORS MUST BE PRE-QUALIFIED BY THE UNIVERSITY OF MINNESOTA.

Sealed proposals will be received by the Regents of the University of Minnesota Purchasing Services, 400 Donhowe Building, 319 - 15th Avenue SE, Minneapolis, MN 55455 until 2:00 pm on September 30, 1999 and will be publicly opened and read aloud.

Bids are requested on the University of Minnesota Hockey Arena and Tennis Center per plans and specifications available at:

Builder's Exchanges in Minneapolis and St. Paul, MN

Construction Bulletin Plan Room, New Hope, MN

F. W. Dodge Plan Room, Minneapolis, MN

National Association of Minority Contractors, Minneapolis, MN

Or:

Franz Engineering

Please call Mr. Mark Forbes at Ankeny Kell Architects for document arrangements or questions.

Contact: Please call Mr. Mark Forbes at Ankeny Kell Architects, 651-645-6806, for document arrangements or questions.

Clearance Sale!!!

Up to 50% off - While Supplies Last

NOTE: Please place your order by phone or fax to confirm availability.



Cutting Board: FISH
Stock No. 15-45 ~~\$18.95~~ \$14.95



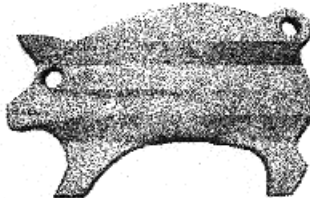
Cutting Board: WOLF
Stock No. 15-48 ~~\$18.95~~ \$14.95



Decal-Fall Lake Scene
Stock No. 15-36 ~~\$4.25~~ \$.75



Poster: MN Poem
Stock No. 15-4 ~~\$3.00~~ \$1.99



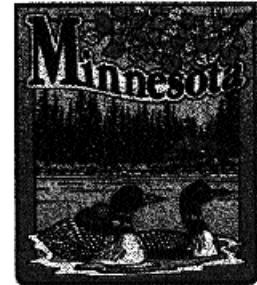
Cutting Board: PIG
Stock No. 15-44 ~~\$18.95~~ \$14.95



Cutting Board: MOOSE
Stock No. 15-49 ~~\$18.95~~ \$14.95




Cutting Board: WHALE
Stock No. 15-46 ~~\$18.95~~ \$14.95



Decal-Loons
Stock No. 15-35 ~~\$4.25~~ \$.75

**Ford Building
117 University Ave.
St. Paul, MN 55155**

**Minnesota's
Bookstore** 

**651.297.3000
1.800.657.3757
Mon-Fri 8am-5pm**

