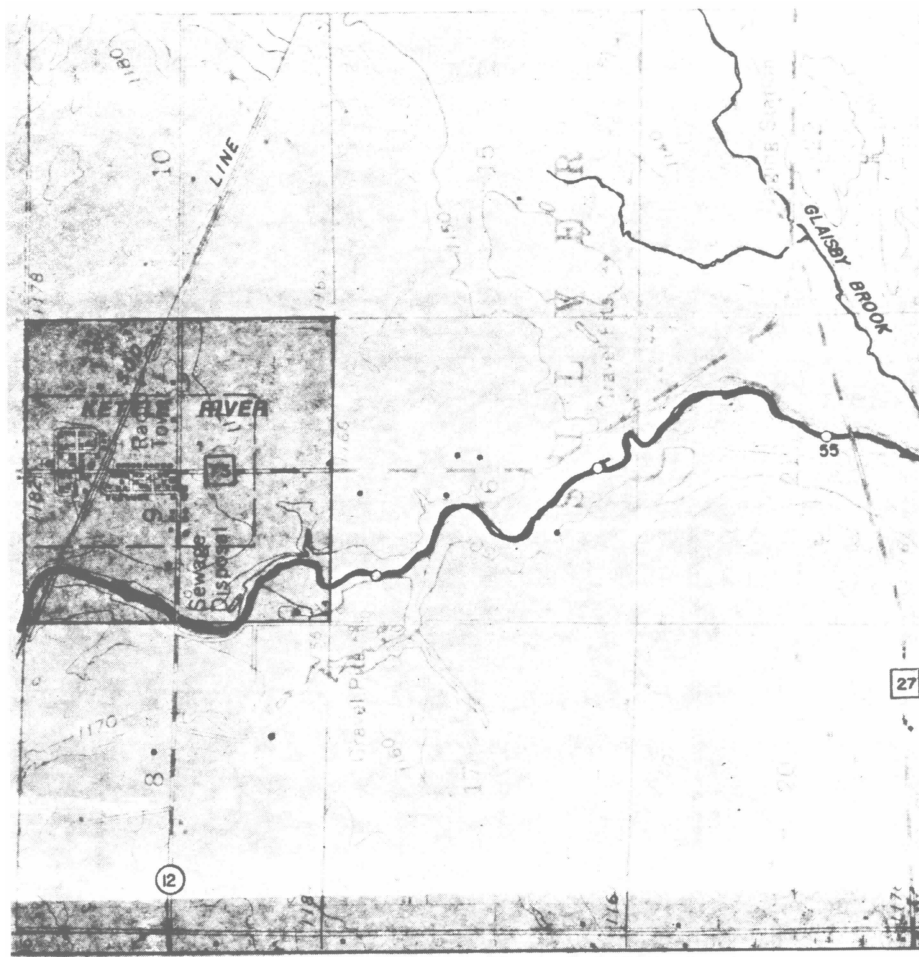

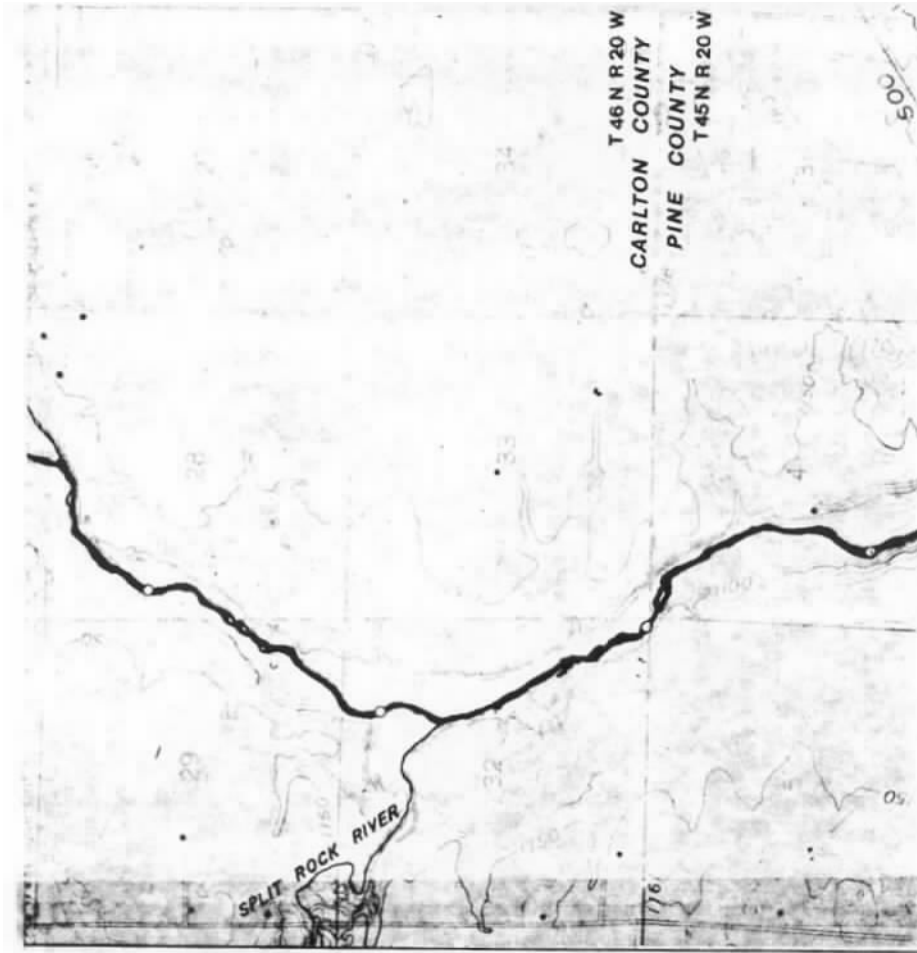


**6105.0710 RECREATION MANAGEMENT MAPS.**

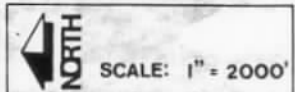
**Subpart 1. Plate 1.**



 <p><b>KETTLE RIVER</b> MANAGEMENT PLAN</p>	<b>RECREATION</b>	
	PROPOSED <b>P</b> <b>A</b> <b>C</b> <b>H</b>	EXISTING <b>P</b> <b>A</b> <b>C</b> <b>H</b>

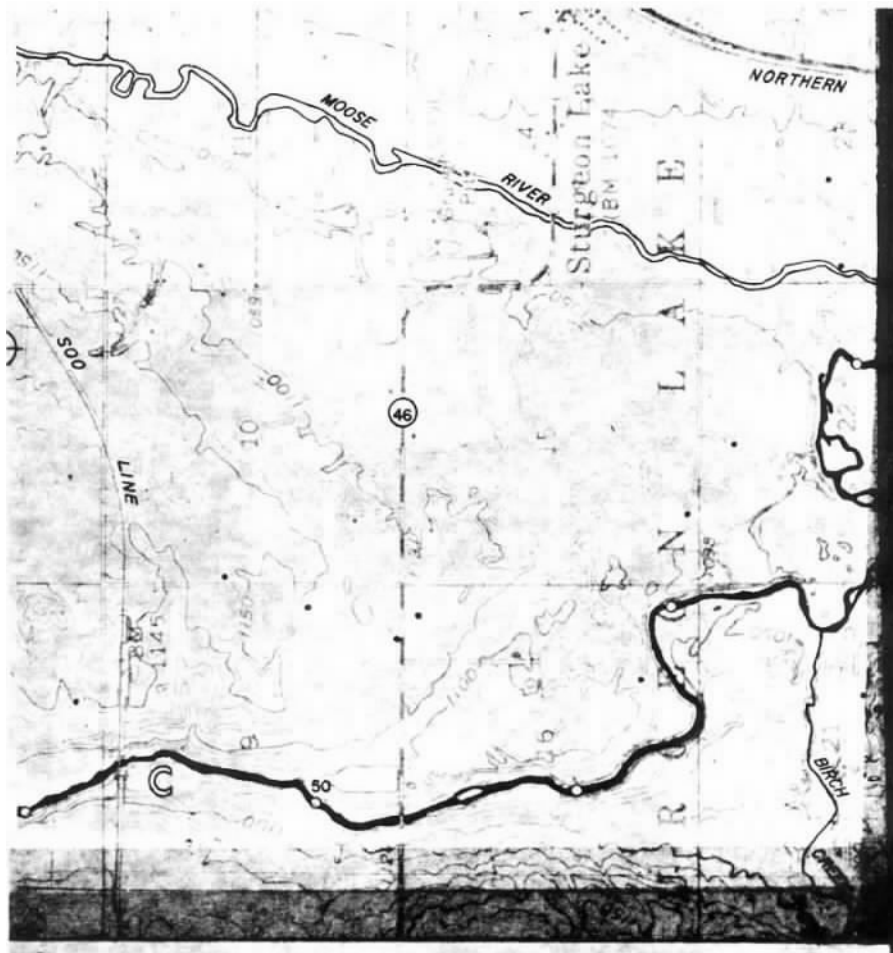


MANAGEMENT		FACILITY
PROPOSED	EXISTING	
⊖ ⊖ ⊖ ⊖ ⊖	⋯⋯⋯⋯	HIKING TRAIL
⊖ ⊖ ⊖ ⊖	⋯ - - ⋯	MULTI-USE TRAIL
⊖ ⊖ ⊖ ⊖	- - - -	TWIN CITY - DULUTH TRAIL
☆	★	HISTORIC SITE

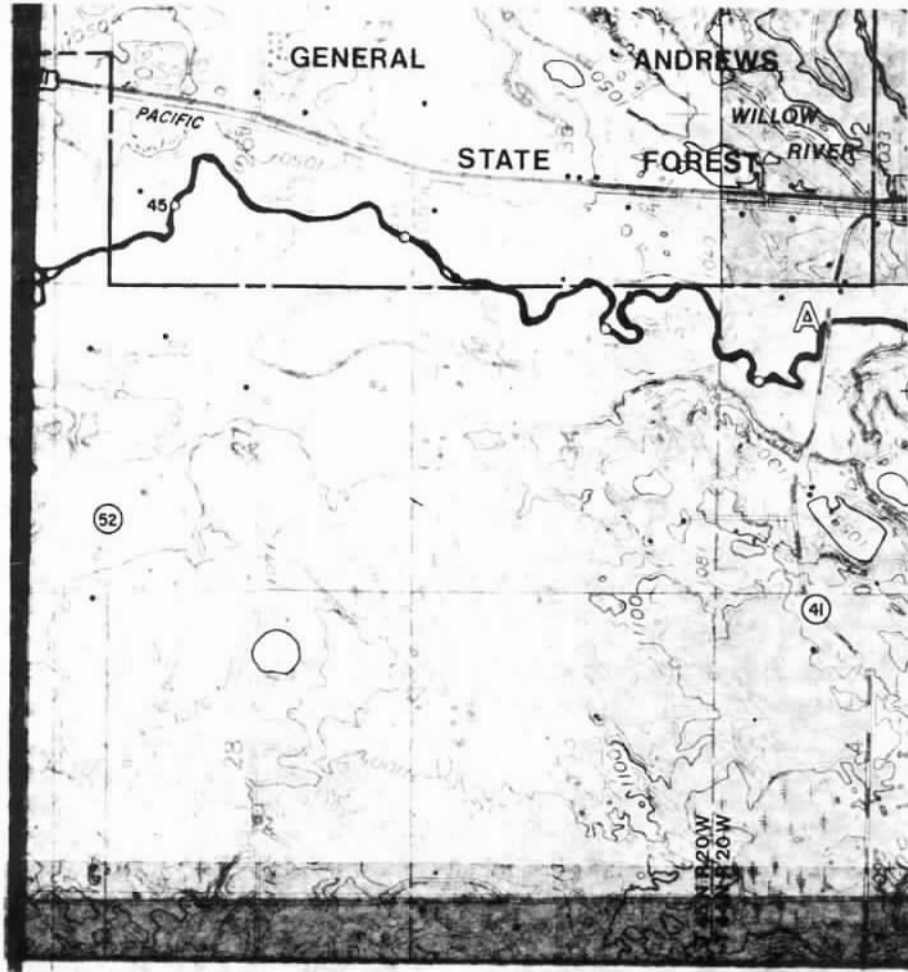




Subp. 2. Plate 2.



RECREATION FACILITY		
PROPOSED	EXISTING	
P	P	PORTAGE
A	A	ACCESS
C	C	CANOE CAMPSITE
H	H	HIKING CAMPSITE



MANAGEMENT		FACILITY
PROPOSED	EXISTING	
⊠⊠⊠⊠⊠⊠	⋯⋯⋯⋯	HIKING TRAIL
⊠⊠⊠⊠	- · - · -	MULTI-USE TRAIL
⊠⊠⊠	- - - -	TWIN CITY - DULUTH TRAIL
☆	★	HISTORIC SITE



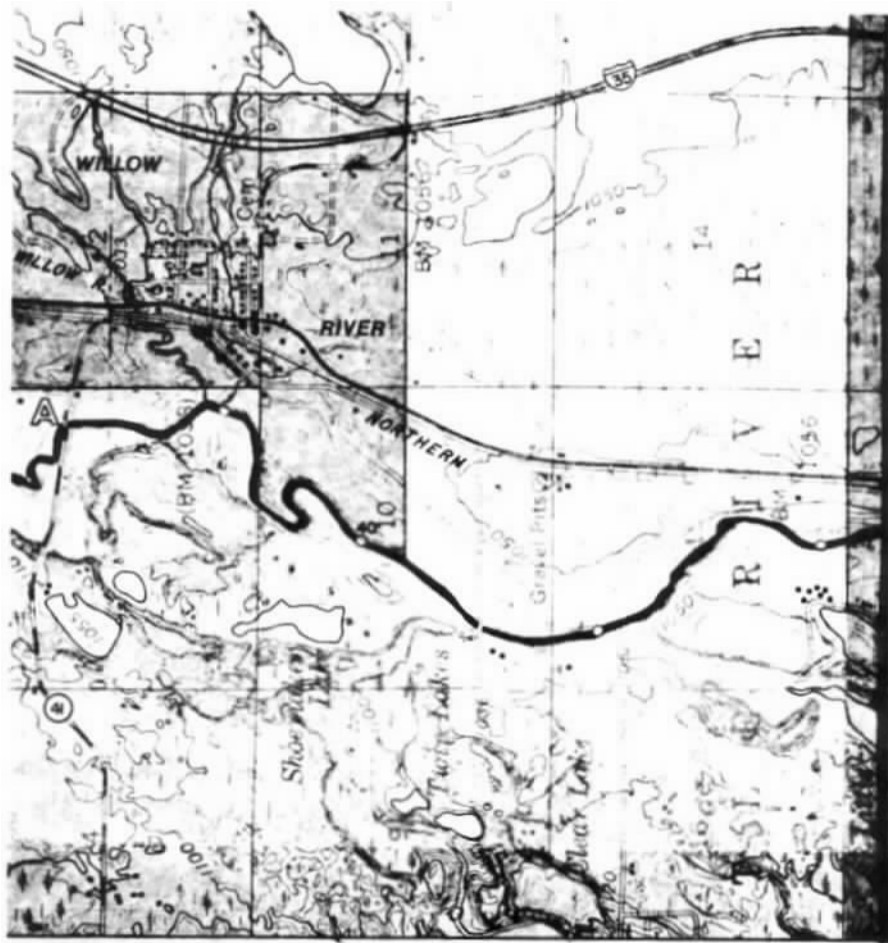
SCALE: 1" = 2000'


**PLATE**

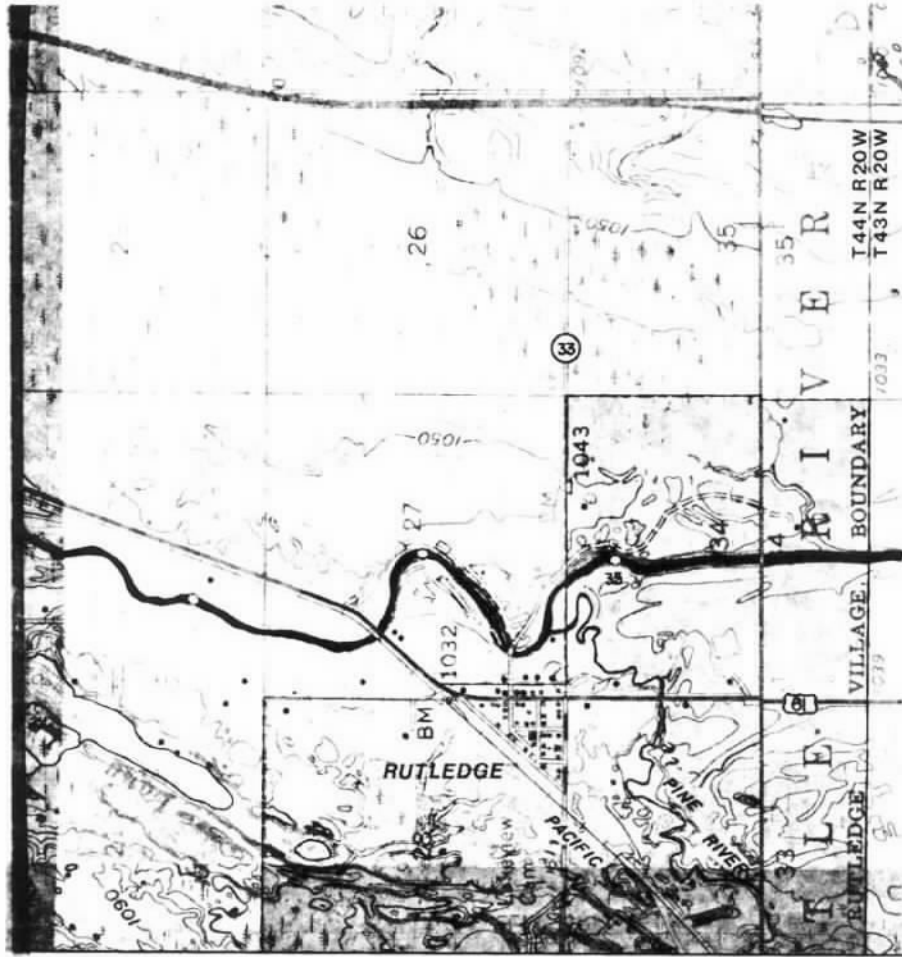


2

Subp. 3. Plate 3.



 <p><b>KETTLE RIVER</b> MANAGEMENT PLAN</p>	<b>RECREATION</b>		
	PROPOSED	EXISTING	FACILITY
	P A C H	P A C H	PORTAGE ACCESS CANOE CAMPSITE HIKING CAMPSITE

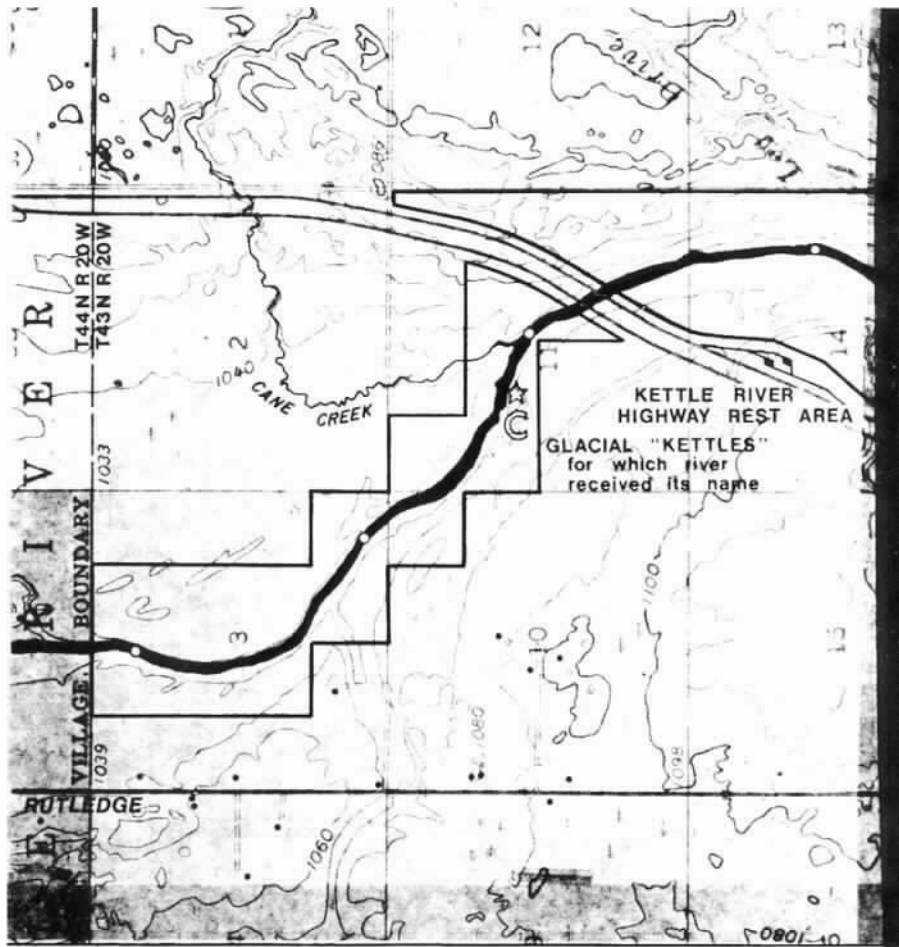



MANAGEMENT		FACILITY
PROPOSED	EXISTING	
		HIKING TRAIL
		MULTI-USE TRAIL
		TWIN CITY-DULUTH TRAIL
		HISTORIC SITE

**NORTH** SCALE: 1" = 2000'

**PLATE** 3

Subp. 4. Plate 4.



 <b>KETTLE RIVER</b> MANAGEMENT PLAN	<b>RECREATION</b>		
	PROPOSED	EXISTING	FACILITY
	<b>P</b>	<b>P</b>	PORTAGE
	<b>A</b>	<b>A</b>	ACCESS
<b>C</b>	<b>C</b>	CANOE CAMPSITE	
<b>H</b>	<b>H</b>	HIKING CAMPSITE	





MANAGEMENT		FACILITY
PROPOSED	EXISTING	
		HIKING TRAIL
		MULTI-USE TRAIL
		TWIN CITY-DULUTH TRAIL
		HISTORIC SITE

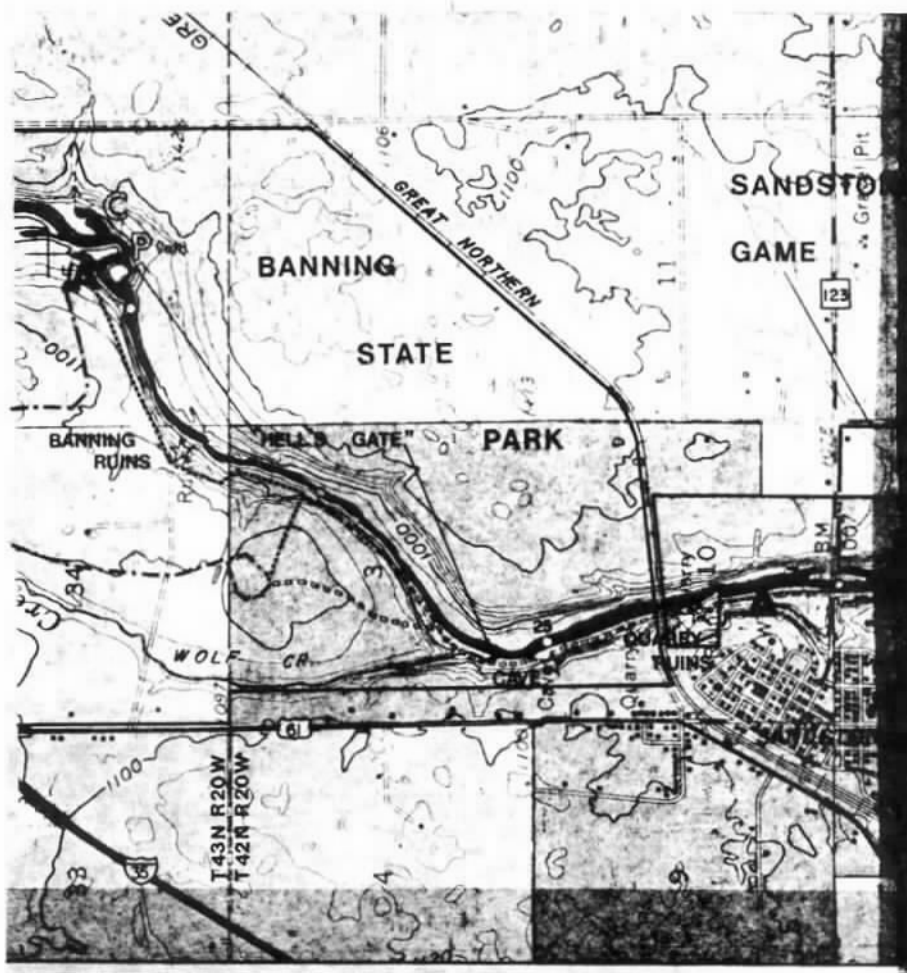
**NORTH**


SCALE: 1" = 2000'

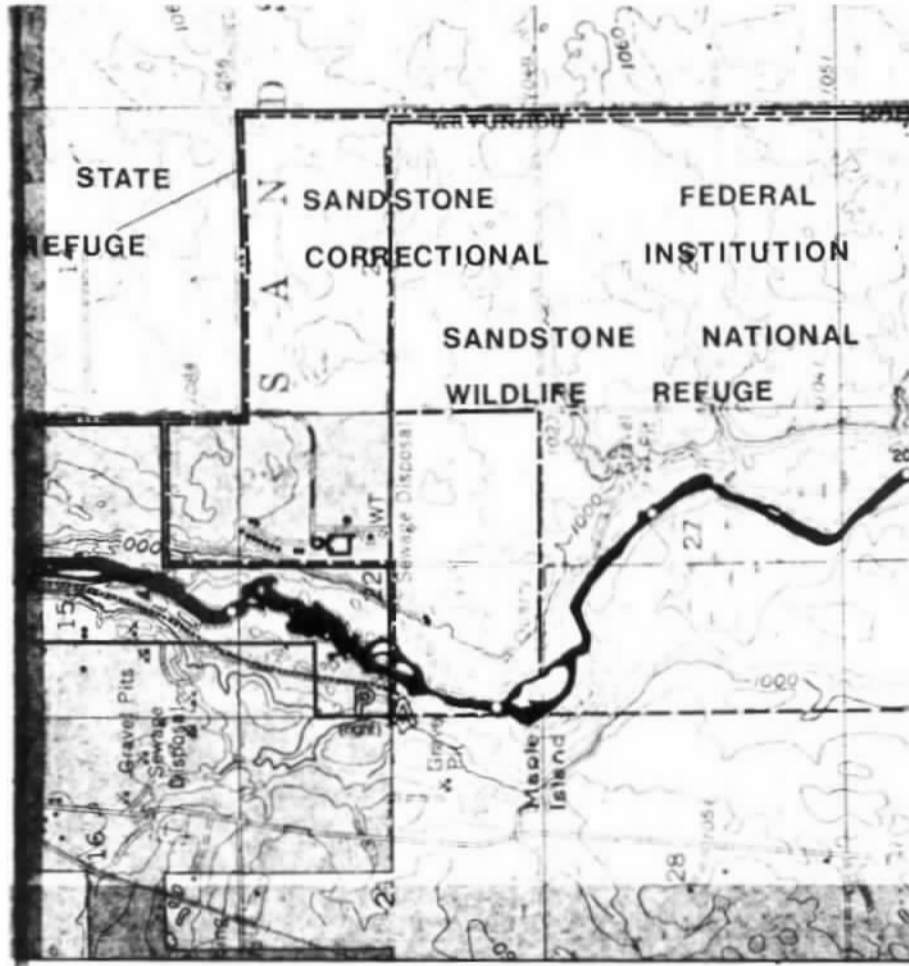
**PLATE**

**4**

Subp. 5. Plate 5.



 <b>KETTLE RIVER</b> MANAGEMENT PLAN	<b>RECREATION</b>		
	<u>PROPOSED</u>	<u>EXISTING</u>	<u>FACILITY</u>
	<b>P</b>	<b>P</b>	PORTAGE
	<b>A</b>	<b>A</b>	ACCESS
<b>C</b>	<b>C</b>	CANOE CAMPSITE	
<b>H</b>	<b>H</b>	HIKING CAMPSITE	

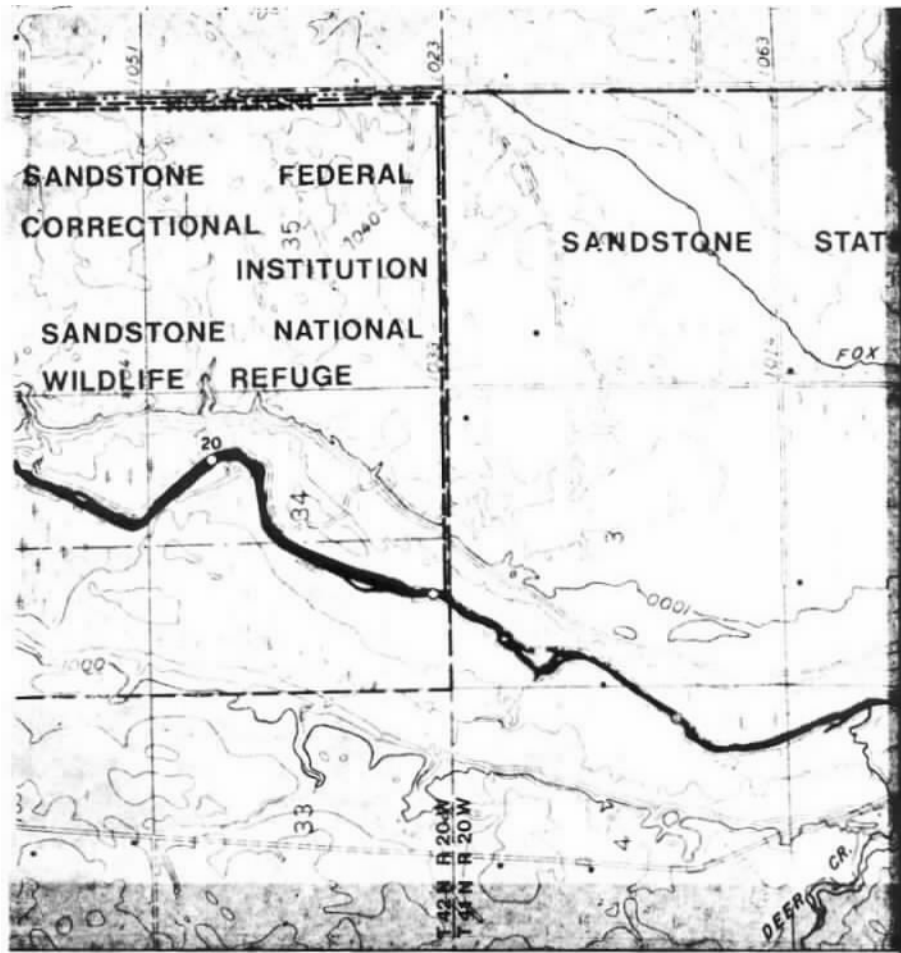


MANAGEMENT		FACILITY
PROPOSED	EXISTING	
		HIKING TRAIL
		MULTI-USE TRAIL
		TWIN CITY-DULUTH TRAIL
		HISTORIC SITE

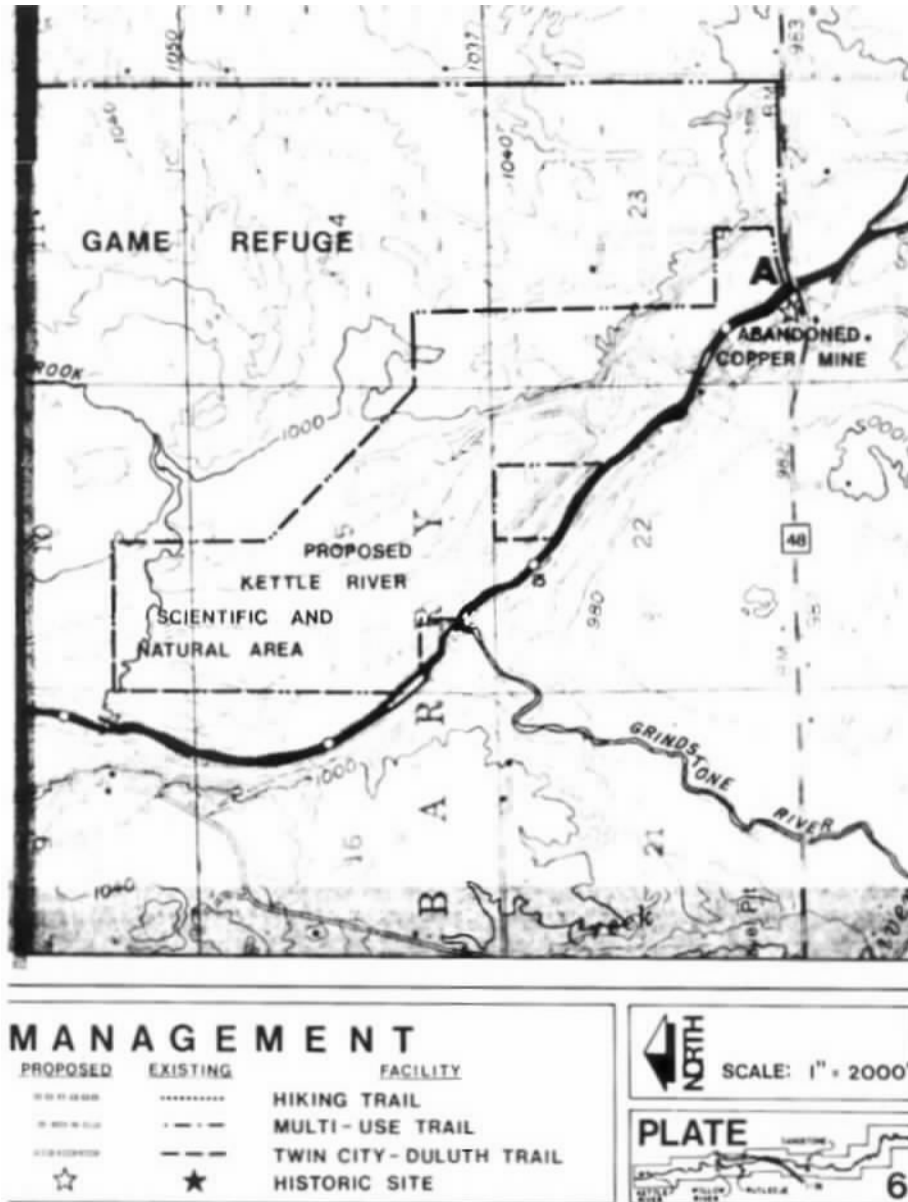
NORTH  
SCALE: 1" = 2000'

PLATE  
  
5

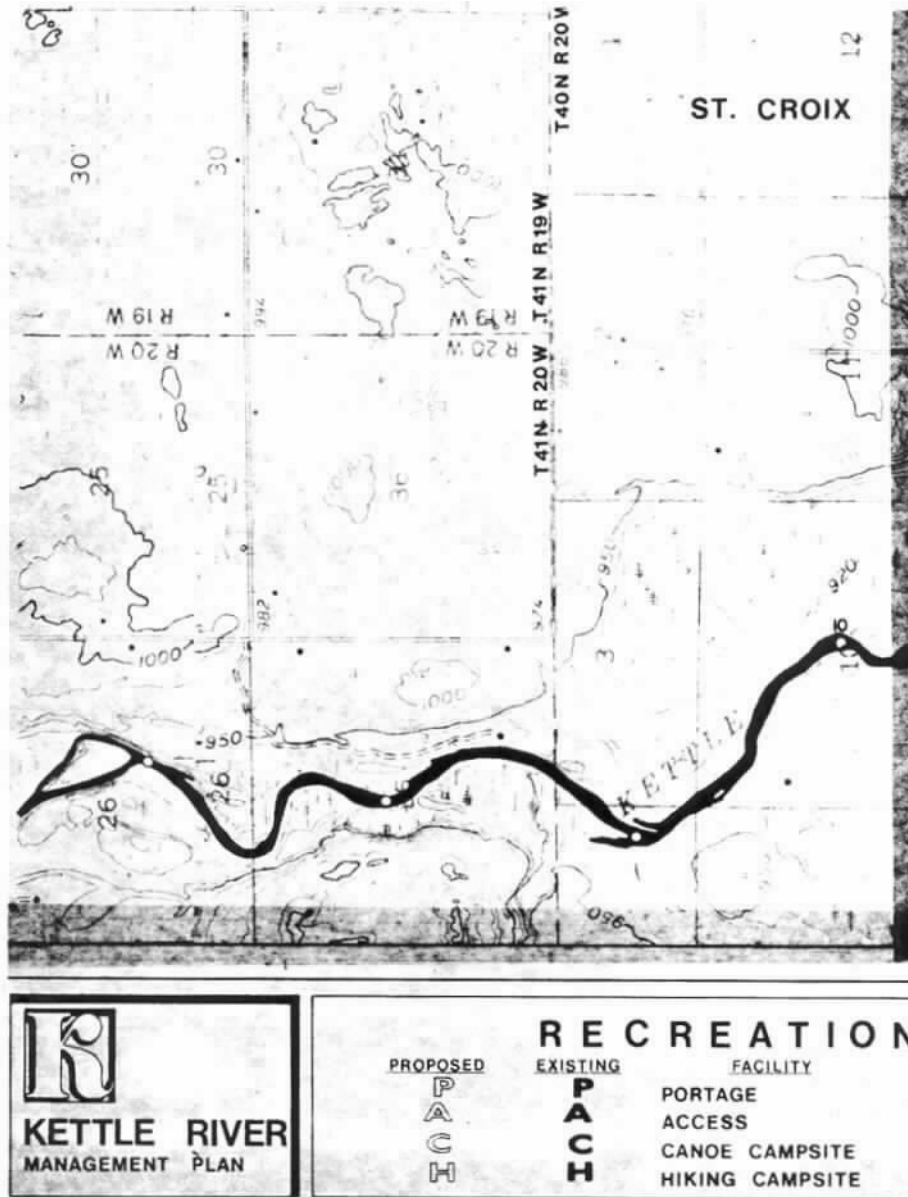
Subp. 6. Plate 6.

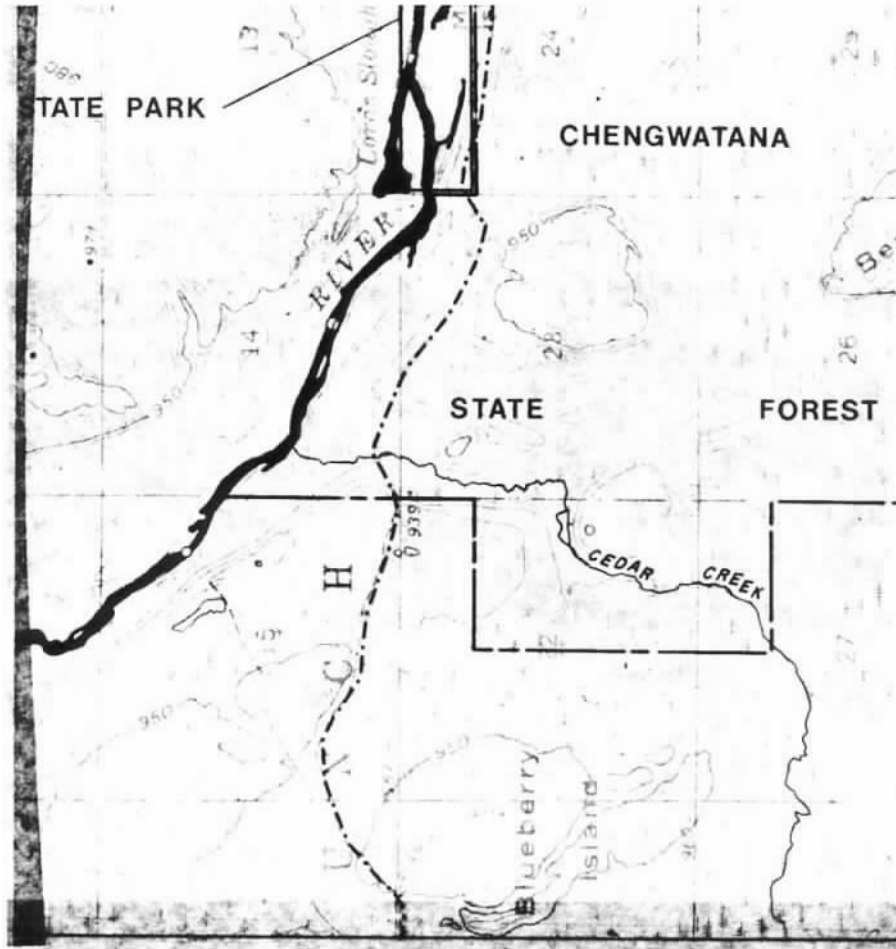


RECREATION FACILITY		
PROPOSED	EXISTING	
P	P	PORTAGE
A	A	ACCESS
C	C	CANOE CAMPSITE
H	H	HIKING CAMPSITE



Subp. 7. Plate 7.



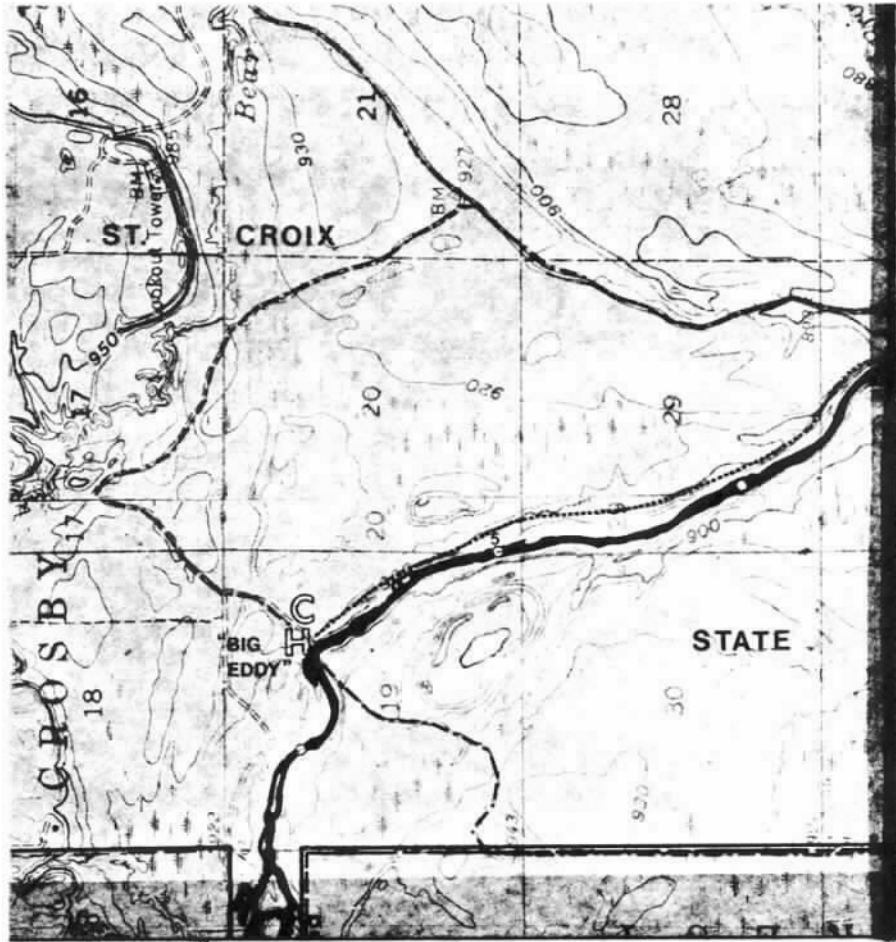


MANAGEMENT		FACILITY
PROPOSED	EXISTING	
○ ○ ○ ○ ○ ○	● ● ● ● ● ●	HIKING TRAIL
○ ○ ○ ○	● ● ● ●	MULTI-USE TRAIL
○ ○ ○	● ● ●	TWIN CITY-DULUTH TRAIL
☆	★	HISTORIC SITE

**NORTH**  
  
 SCALE: 1" = 2000'

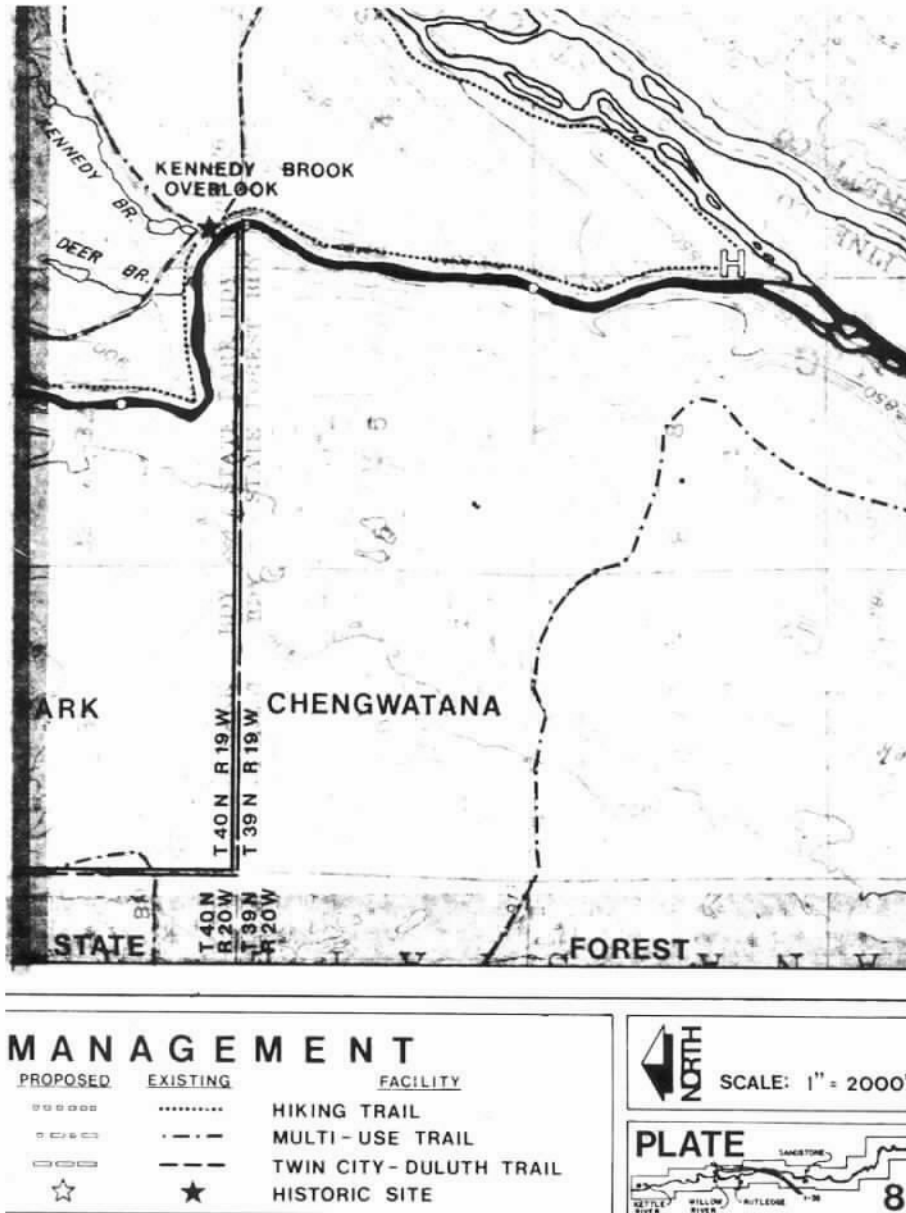


Subp. 8. Plate 8.



RECREATION FACILITY		
PROPOSED	EXISTING	
P	P	PORTAGE
A	A	ACCESS
C	C	CANOE CAMPSITE
H	H	HIKING CAMPSITE





**Statutory Authority:** *MS s 104.35*

**Published Electronically:** *June 11, 2008*