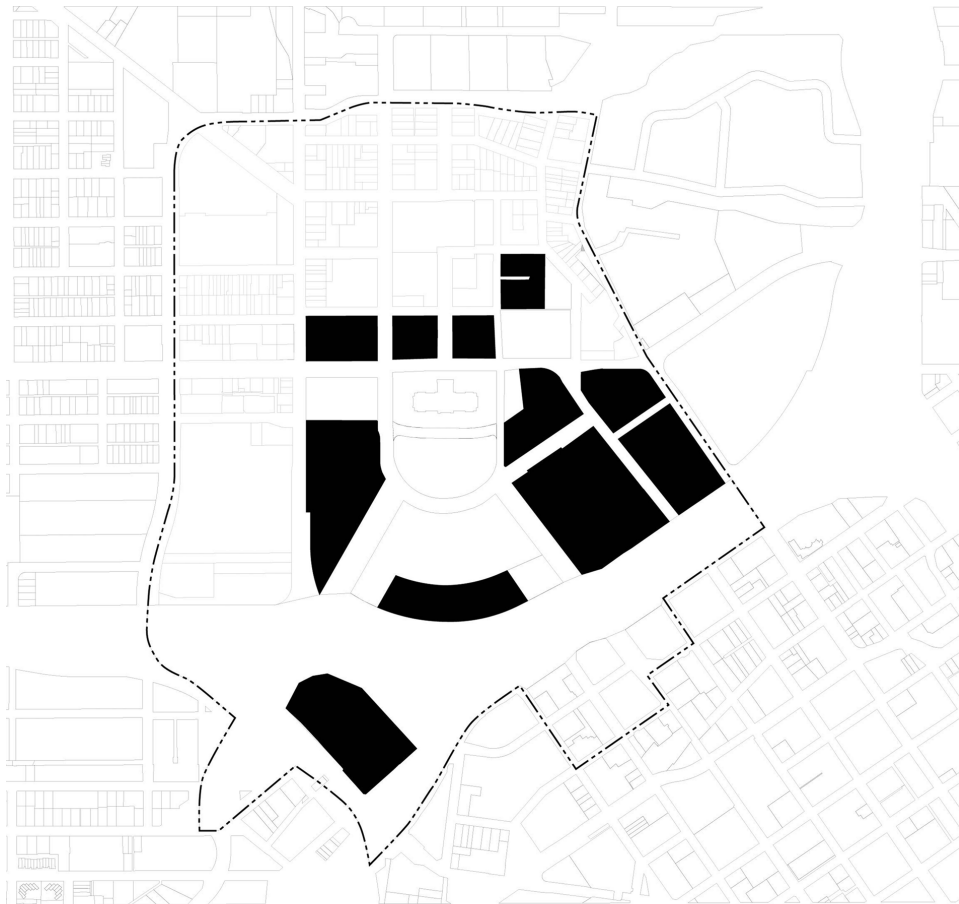
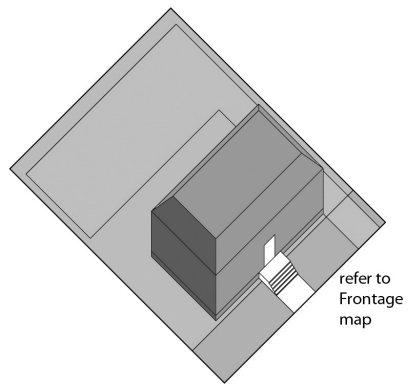


2400.2210 G-1 GOVERNMENT DISTRICT.

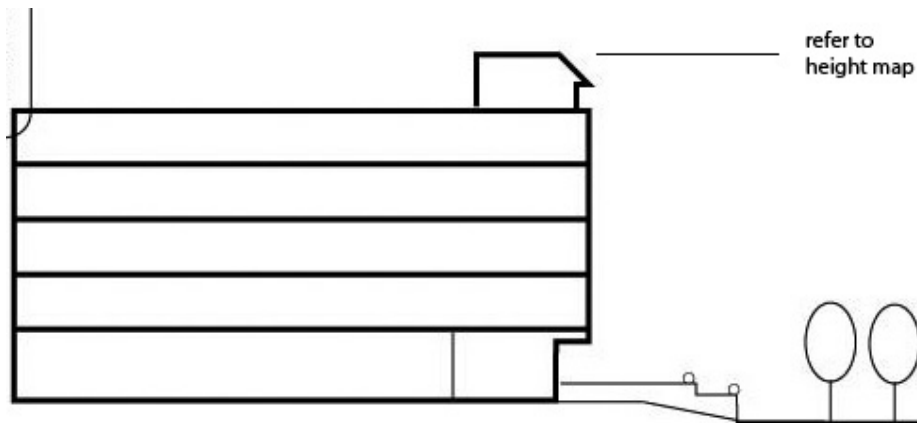
Subpart 1. **District intent.** The intent of the G-1 Government District is to provide for the orderly growth of state government and the preservation and enhancement of existing structures within the Capitol area.

G-1 GOVERNMENT DISTRICT

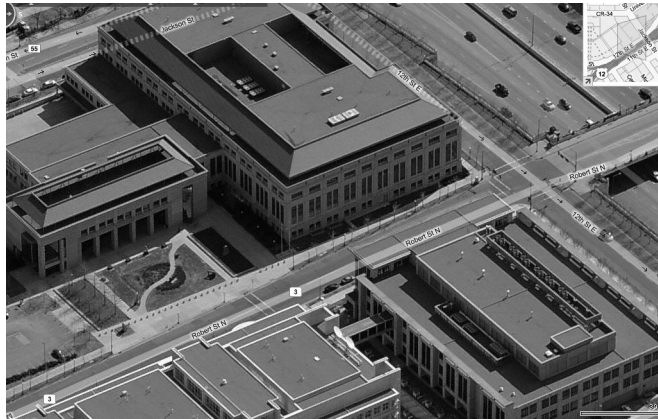
Building and Parking Placement Example



Building Height Measurement Example



Examples of Typical Buildings and Views, G-1 District



Subp. 2. **Building placement.** The following minimum setbacks apply to building placement in the G-1 district:

	Minimum setback
Front yard	See frontage map
Corner side yard	Zero feet

