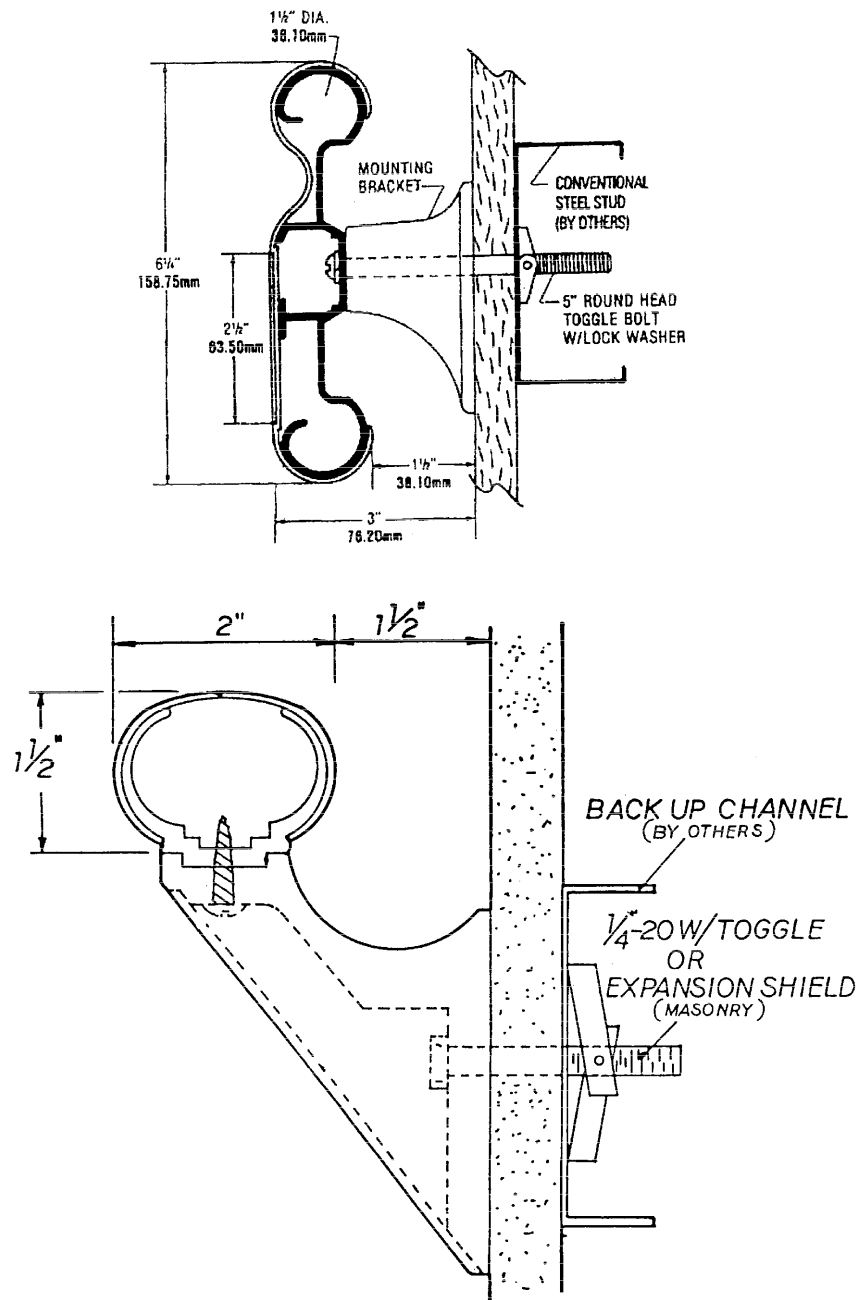


**4658.4120 HANDRAILS AND CORRIDORS; NEW CONSTRUCTION.**

Subpart 1. **Handrails.** Securely anchored, durable handrails must be provided on both sides of corridors used by residents. If a length of corridor space between doorways is 60 inches or less, a handrail is not necessary for that portion of the corridor. The handrails must be mounted at a height of 32 to 34 inches to the top of the handrail. The handrail must be a round or oval section, 1-1/2 to two inches in diameter, and the clear distance between the handrail and wall must be 1-1/2 inches. The handrail must be designed to provide the means for a full hand grip around the handrail. Wall bracket supports must be provided at least six feet on center, and the mounted brackets must be capable of supporting a load of not less than 250 pounds. The following two diagrams illustrate two acceptable handrails.



Subp. 2. **Corridor width.** The unobstructed width of all corridors in resident areas must be at least eight feet. All exits must comply with the Minnesota State Building Code.

**Statutory Authority:** *MS s 144A.04; 144A.08*

**History:** *21 SR 196*

**Published Electronically:** *April 24, 2023*